

Local advertising and news magazine, delivered free to over 3,000 homes.  
Includes Burpham Community Association newsletter.

# Burpham Pages

November &  
December  
2020

Incorporating Jacobs Well

## **Sainsbury's Planning**

An application to extend loading bay with the loss of over 60 trees and potential noise increase.

## **Weybrook Park**

What was it before it was a modern housing estate? We trace the area back to the 12th century.

## **Your digital footprint**

Can we lighten our digital footprint, be more effective & efficient and have less of an impact on the environment?

Includes: Community Update from the Burpham Community Association

[www.burpham-pages.co.uk](http://www.burpham-pages.co.uk)

# Do you find financial decisions a bit of a headache?

## Get rid of the pain with Price Ferguson

**Price Ferguson is a leading wealth management and financial planning firm based in Guildford.**

Examples of our areas of expertise include:

- Inheritance tax planning
- Pensions and retirement
- Wealth management
- Financial planning



To book a free, no-obligation initial meeting, please get in touch by phone (01483 456477) or email [michael@priceferguson.com](mailto:michael@priceferguson.com)

**More information is available  
on our website: [www.priceferguson.com](http://www.priceferguson.com)**

Price Ferguson is authorised and regulated by the Financial Conduct Authority  
Registered in England & Wales Company No. 03893166

## Burpham Pages

Incorporating Jacobs Well

Local advertising and news magazine,  
delivered free to over 3,000 homes.

Focussed on the local community and  
the services available in the general  
area. Includes Burpham Community  
Association newsletter.

[www.burpham-pages.co.uk](http://www.burpham-pages.co.uk)

## Editorial

Editor **Paul Nicholls**

Contributors **Moir MacQuaide,  
John Boon, Ali Fisher, Revs Jo &  
James Levasier**

## Production

Original design

Generator Creative Consultants

Printed by **Kingsley Print**



## Doing our bit for the Environment

Our printers are ISO 14001 environmental  
accredited, use vegetable based inks  
to print the magazine and recycle all  
waste paper and materials.

To mitigate the CO<sub>2</sub> emissions created  
in the production of our paper 'Carbon  
Capture' contributions are paid to  
the Woodland Trust who will plant  
woodland at one of their accredited  
woodland creation sites in the UK.

To find out more please visit  
[www.woodlandcarbon.co.uk](http://www.woodlandcarbon.co.uk) and  
[www.woodlandtrust.org.uk](http://www.woodlandtrust.org.uk)

## Contact Us

For advertising and  
general enquiries:

☎ 07597 904755

@ editor@burpham-pages.co.uk

✉ Burpham Pages, PO Box 1520,  
Guildford GU1 9WQ

🐦 @burphampages

📘 facebook.com/burphampages

## Advertising copy deadline

for January – February 2021  
issue is **7th December 2020**

Whilst care has been taken to ensure  
that the information contained in  
Burpham Pages is accurate, the  
publishers take no responsibility for  
the accuracy of statements made  
by advertisers, and accept no  
responsibility for any omissions or  
errors which may occur. Advert prices  
and dimensions are shown on our  
website [www.burpham-pages.co.uk](http://www.burpham-pages.co.uk)

Burpham Pages is a trading name of Brand Era Limited.  
Registered in England & Wales No. 08915808.  
Registered office: 7 Way Court, Mary Road,  
Guildford, Surrey GU1 4QU

Cover image: by Tatiana Byzova at Unsplash

# Welcome

Dear Neighbours, this year's 'festive' issue of Burpham Pages isn't quite as festive as normal. Usually we have lots of ads and editorial telling us about firework events, Christmas craft fairs, visits from Santa and so on. But 2020 has been a very different year and seems set to remain that way well in to 2021.

I hope that you have managed to keep well this year and you've been free from all ills, particularly COVID-19. If not, hopefully you've managed to get the help you needed and have either recovered or are well on the way to a full a recovery.

Perhaps there will be positives that we can draw from the current restrictions. Fireworks are going to have to be enjoyed from home within your own family bubble. So, it'll be a time when family's can enjoy being together. If the weather is not too cold and wet get the BBQ out and cook some burgers and sausages and have your own little firework party. Perhaps the sky will be even more lit up with colourful bangs, pops and screeches as more family's launch their fireworks from the back garden (keep safe and follow the instructions on the box).

Christmas too will be somewhat different. Again, we'll be spending time within our family bubbles but let's try and make this a time of enjoying the closeness and support of each other and consider it as 'different' rather than a disappointment.

You'll see in this issue that Burpham Church are still organising various events and workshops over the festive period, some of which can be enjoyed online. There are also organisations offering their help and support to anyone who needs it plus looking for help from volunteers. Please do help out if you can or call if you need support.

I hope you enjoy your Halloween, Firework Night and Christmas and I look forward to talking to you again in a more positive start to 2021. Stay safe!

**Paul Nicholls (Editor)**

editor@burpham-pages.co.uk

## Contents

- 5 **News & events**
- 11 **What's on this month**
- 12 **Burpham Pages crossword**
- 15 **What is it that you feel you need right now?**
- 16 **Community Update – BCA**
- 19 **Baking for Christmas (Recipe)**
- 20 **Weybrook Park**
- 24 **Lightening Your Digital Footprint**
- 29 **Burpham Gardening Club News**
- 30 **Useful numbers**

LARGE FORMAT  
DIGITAL  
LITHOGRAPHIC

  
**KINGSLEY**  
PRINT & DESIGN

**FOR ALL YOUR PRINT REQUIREMENTS**

please call 01784 430533  
or visit [www.kingsleyprint.co.uk](http://www.kingsleyprint.co.uk)





# TREE SURGERY & LANDSCAPING

**LOGS & WOODCHIP  
SUPPLIERS**

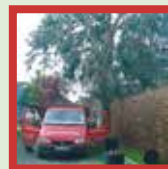
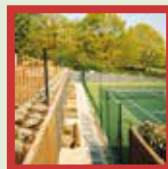
**QUALIFIED AND INSURED**

**24HR EMERGENCY SERVICE**

**FREE QUOTATIONS**

Based in Merrow and established in 1992, Roots & Shoots is a family-run tree care company which offers a professional and comprehensive arboricultural and landscaping service. We take great pride in our reputation and we offer all our clients a professional, courteous, and personal service. All our tree work is done to British Standards 3998 and is carried out to the highest standards by qualified staff.

We aim to ensure the conservation of trees through proper pruning practices. By embracing the latest research and modern techniques we provide the very best care for your trees, and with this in mind, we are happy to provide free advice and estimates.



**Checkatrade.com**  
Where reputation matters

**Call** 01483 503361 **or** 07768 456828

**Email** [enquiries@rootsandshoots-treesurgery.co.uk](mailto:enquiries@rootsandshoots-treesurgery.co.uk)

**[www.rootsandshootssurrey.co.uk](http://www.rootsandshootssurrey.co.uk)**

Local news & events: get involved and tell us more about your news and events organised in Burpham, Jacobs Well and the surrounding areas.



Woodland between Devoil Close and Sainsbury's looking from The Copse.

## Sainsbury's application to extend loading bay with the loss of over 60 trees and potential noise increase.

For the most part, Sainsbury's Supermarket is a good neighbour: convenient, friendly and community-minded. But in the small hours, this changes. Freight comes in and out of the loading bay as goods are unpacked. Reversing beeps and the clank of pallets are at their most disruptive between one and three o'clock in the morning, weekdays and weekends.

Sainsbury's is now planning to expand their loading and delivery van parking bay into the green area which buffers the supermarket from the Weybrook Estate, and just across the road from

the long-suffering residents of London Road. The new parking spaces for delivery vehicles may bode ill for traffic density, but unloading is an immediate threat to residents' sleep.

**Burpham Community Association** took the unusual step of posting an alert to adjacent householders to view the plans before the consultation expired on 14th October. Respondents have complained about the threat of night-time noise and also about the loss of precious green space which backs on to houses. One reply contains an authoritative account of the wildlife threatened by the development.

The **Burpham Neighbourhood Plan** specifically rejects the erosion of its remaining patches of green, and those of us who live nearby think of the woods as protection against traffic fumes and a pleasant back-route for shopping and dog-walking.

Supermarkets have teams of planners and lawyers whose job it is to win expansion for their stores. One small gain becomes the springboard for the next. How long before an application goes in to route heavy goods vehicles on and off the London Road? And after that, how long before they are joined by the traffic from the Gosden Hill development and the re-routing of Slyfield traffic? Our traffic infrastructure is already overloaded.

Piecemeal planning has not been helpful to Burpham – the Aldi traffic jam is evidence of that – so we should not be surprised if there is vigorous opposition to the plan.

**Sue Hackman (BCA)**

## Burpham Community Support Update

A joint initiative between **Burpham Church** and **Burpham Community Association** to provide support to anyone who needs it in Burpham.

### How can we help?

Six months on and we are still here to provide Burpham with a safety net of support and we do not want anyone



**We must keep on protecting each other.**



**HANDS**



**FACE**



**SPACE**



**STAY ALERT • CONTROL THE VIRUS • SAVE LIVES**

Whilst care has been taken to ensure that the information contained in Burpham Pages is accurate, the publishers take no responsibility for the accuracy of statements made by, nor the opinions of, contributors, and accept no responsibility for any omissions or errors which may occur.



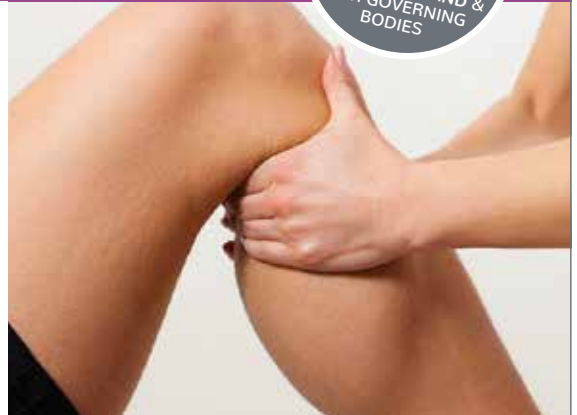
Osteopathy & sports massage  
specialists in Guildford

[www.gwosteopathy.co.uk](http://www.gwosteopathy.co.uk)

**New clinic opening soon in Stoughton**  
at Parklands on Queen Elizabeth Park



**ALL NEW PATIENTS**  
We are offering a £20 discount  
off your first 45 minute appointment  
(includes treatment on the day).



We are a back specialist clinic offering IDD Therapy  
(for more info visit [www.gwosteopathy.co.uk](http://www.gwosteopathy.co.uk))

### We are a local friendly, highly qualified health clinic with a very good reputation.

Our team are all highly qualified and registered osteopaths & sports therapists who treat a wide range of conditions. We use **osteopathy, acupuncture, sports massage & rehabilitation exercise programmes** all tailored to the patient's needs.

We offer treatment for:

- Neck pain relief
- Treatment for back pain
- Pain relief for sciatica
- Joint pain treatment, including hip pain relief & knee pain relief
- Treating arthritic pain
- Shoulder pain relief
- Headache relief
- Muscle spasms
- Treatment of work-related aches and pains
- Sports injuries
- Mummy & baby osteopathy
- IDD DISC therapy treatment

FREE 10 MINUTE phone consultations for pre-booking questions, if required.

[www.gwosteopathy.co.uk](http://www.gwosteopathy.co.uk)  
[info@gwosteopathy.co.uk](mailto:info@gwosteopathy.co.uk)  
Call **01483 400207**

Clinics at:  
Dapdune House Surgery, Guildford  
**OPENING SOON** at Parklands,  
Queen Elizabeth Park, Stoughton

Registered clinic:



General  
Osteopathic  
Council

to struggle or suffer in silence in our own community. We're here to help all ages, including younger people far from home or those new to the area who may not know anyone, particularly if they suddenly have to self-isolate.

We have provided a valuable shopping service for those unable to go shopping, a prescription collection service when pharmacies were not routinely delivering medication and we have really enjoyed chatting as we have taken calls and delivered to people. Sadly, for many of our volunteers, we were not required to walk many dogs!

There is a great feeling of uncertainty about what the winter months will bring and we therefore want to continue to offer a volunteer run support service to our own community. There is a core group of volunteers available and a large reserve pool we can draw on if the need arises. Shopping seems less of a problem now with increased online opportunities or family and neighbour's help but if someone suddenly has to isolate or is too vulnerable to get out, we can do an emergency shop. Many chemists now offer delivery services but again at short notice we can help with collection and delivery of prescriptions.

We really enjoyed our chats with people and our volunteers valued getting to know their neighbours, on the doorsteps.

Our mobile is monitored Monday to Friday 9am - 5pm and during these hours we will respond to messages within three hours. Our email address is monitored every day [support@burphamca.org.uk](mailto:support@burphamca.org.uk). If you just want a friendly chat do phone our number **07880 586455**.

### Christmas support

Our thoughts are now turning to Christmas and we are keen to ensure nobody is lonely or isolated. We are exploring various ideas to bring 'comfort and joy' to Burpham so please let us know if you, or anyone

you know, is likely to need a bit of friendly support. This could be older people but also younger people far from home or those new to the area who may not know anyone. Just drop us an email or call our number.

We are looking for volunteers who can knit or crochet during November for one project. Simple patterns provided so let us know if this is for you.

We are working jointly with **Burpham Community Association** and **Burpham Church** around Christmas and if you have any ideas about how Christmas can be made brighter in Burpham do let us know.

### Examples of other local support available

**Age UK Surrey** provides a range of services to prevent loneliness and isolation and help people over 50 to remain independent and informed. Call Age UK Surrey **01483 503414** or email [enquiries@ageuksurrey.org.uk](mailto:enquiries@ageuksurrey.org.uk). Age UK offers Information and advice on a range of issues, including money, housing and care. Expert advisors can assist over the telephone with benefit entitlement claims and signpost to other organisations as required.

### Specific help offered by Age UK Surrey:

- **Volunteer Shopping** – for essential items.
- **Check-in and Chat** – a regular friendly chat.
- **Help at Home** – a paid for service providing cleaning, laundry, light meal preparation, companionship and gardening.
- **Get Online Digital Telephone support.** Help with getting online, understanding Zoom and other virtual meeting website, social media or advice on your computer or mobile device.
- **Virtual Coffee Mornings** with our Information and Advice Manager. An opportunity to ask questions and have a sociable chat.

### Voluntary Action South West Surrey – 01483 504626 or

[www.vasws.org.uk](http://www.vasws.org.uk) Provides lists of activities, help to enable people to join in and they have an extensive directory of volunteering opportunities.

### Peer Talk – 07719 562617 or

[www.peertalk.org.uk](http://www.peertalk.org.uk) Guildford peer support group for those living with depression, anxiety and related distress for those facing depression.

**Don't suffer in silence in Burpham... contact us for help 07880 586455 or email [support@burphamca.org.uk](mailto:support@burphamca.org.uk)**

### Can you donate to The Hygiene Bank?



**The Hygiene Bank** is a grass roots charity that was founded two years ago to combat hygiene poverty. We believe that being clean is not a luxury but a basic human right.

Hygiene poverty is not being able to afford the everyday hygiene and personal grooming products most of us take for granted. The reality of low income is that it restricts people's options, leaving them caught between being able to heat their home, pay their rent, eat or being clean. Hygiene poverty strips people of their dignity.

The Guildford branch of the Hygiene Bank has been able to support local people in need via Community Partners including the Guildford Family Centre, local infant, primary and secondary schools, local churches, food banks, shelters for the homeless

### Do you have any events happening in and around Burpham & Jacobs Well that you would like added in the next issue?

Our next issue of Burpham Pages will cover January & February 2021. If you would like your event, happening during this period, added to our 'News & events' or 'What's on this month' sections please e-mail the details to [editor@burpham-pages.co.uk](mailto:editor@burpham-pages.co.uk) before **7th December 2020**.





**Aldrams**  
Professional Cleaning Services

Providing an exceptional service of high specification cleaning for over fourteen years.

- ◆ End of tenancy cleaning
- ◆ Regular domestic cleaning
- ◆ Post builders cleans
- ◆ Communal area cleans

Recommended by some of Surrey's best estate agents, builders and landlords.

Aldrams@hotmail.com

07538790668

www.aldrams.co.uk



GUILDFORD CHIROPRACTIC CENTRE

### Chiropractic and Physiotherapy

Headache and migraine  
Neck pain • Back pain  
Shoulder, arm, wrist and hand problems  
Hip, knee, ankle and foot problems  
Sports injuries  
Rehabilitation after fractures and joint replacements (such as hip and knee)



Philip Hehir DC MSc MRCC  
Alain Michelotti DC FRCC MCSP  
Andrew Hewitt DC MRCC  
Sandy Boniface DC BSc MRCC

**Tel: 01483 562830**

**www.guildfordchiropractic.co.uk**

200 London Road, Burpham, Guildford GU4 7JS

## Burpham Preschool Make learning fun!



- For ages from 2½ to 5 years
- Rated 'Good' by Ofsted
- Fully qualified, enthusiastic staff with many years' experience
- A safe and nurturing environment where children can learn & grow
- Enclosed garden and access to a large playing field.
- Mondays, Tuesdays, Wednesdays and Fridays
- Free early years funded hours available



Burpham  
Preschool  
in partnership with



BURPHAMCHURCH  
SHARING THE GOOD NEWS OF JESUS

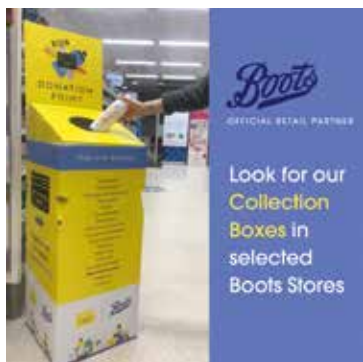
**Contact for more information and space availability:**

Telephone 01483 825533 or 07598 211375 E-mail [grace@burphamchurch.org.uk](mailto:grace@burphamchurch.org.uk)

Church of the Holy Spirit, New Inn Lane, Guildford GU4 7HN

**www.burphamchurch.org.uk**





and womens' refuges. We ask people to donate unused, unopened hygiene products via our collection points which are located in Waitrose in York Road, Boots in the High Street and Epsom Road.

Covid-19 has increased the demand on our project. To help us continue to support local families we need your

help – please consider buying an extra item each week to donate, or you can donate via our website:

[www.thehygienebank.com](http://www.thehygienebank.com)

For further information contact the Guildford Project Coordinator:

[thbguildford0@gmail.com](mailto:thbguildford0@gmail.com)

[@thehygienebankguildford](https://www.facebook.com/thehygienebankguildford)

[@thehygienebank](https://www.twitter.com/thehygienebank)



## Guildford City Football Club

first team **home fixtures**

(subject to COVID-19 regulations at the time of the game.)

### November 2020

4th	19.30	<b>Hanworth Villa</b>	League
7th	15.00	<b>Ascot United</b>	League
11th	19.30	<b>Molesey</b>	League
21st	15.00	<b>Cobham</b>	League

### December 2020

5th	15.00	<b>Banstead Ath.</b>	League
19th	15.00	<b>Badshot Lea</b>	League
28th	15.00	<b>SCR</b>	League

To find out more about Guildford City check out the clubs new YouTube channel, as well as our Twitter and Facebook pages. Please visit [www.guildfordcityfc.co.uk](http://www.guildfordcityfc.co.uk) for a full list of fixtures and results, the latest news, history of the club, online shop and much more.

### Do you have any events happening in and around Burpham & Jacobs Well that you would like added in the next issue?

Our next issue of Burpham Pages will cover January & February 2021. If you would like your event, happening during this period, added to our 'News & events' or 'What's on this month' sections please e-mail the details to [editor@burpham-pages.co.uk](mailto:editor@burpham-pages.co.uk) before **7th December 2020**.

# Generator.

empowered by open-thinking

If you want to promote your business to a larger audience you'll need to have a memorable identity and an engaging message that inspires people to get in touch with you.

We can help you with the design, artwork and production of your:

- Website
- Logo
- Brochures
- Advertising
- Marketing & PR
- Social media

Call us on **01483 205010** to discuss your specific requirements.

Design, branding and marketing services for all sizes of company from start-ups to corporations

**Generator Creative Consultants Ltd**  
T +44 (0) 1483 205010  
E [empowered@generator-creative.com](mailto:empowered@generator-creative.com)  
[www.generator-creative.com](http://www.generator-creative.com)

Listen. Think. Create. Inspire



*Caring for you and your smile*



## Full dental treatments have now resumed

Our patients health and safety remain our priority during the medical pandemic, our opening hours have been extended in order to service our patients and to allow us to adhere to new regulations.

We're open from 7.00am to 8.00pm Monday to Friday and 9.00am to 3.00pm on Saturdays.

## We are currently offering **FREE consultations** for dental implants

Call us on **01483 565290** for further details and to book an appointment

**01483 565290**

4 Waterden Road, Guildford, GU1 2AW  
[www.waterdendental.co.uk](http://www.waterdendental.co.uk)

**ZOEY  
HACKNEY**

**PROFESSIONAL PAINTING  
& DECORATING**

Qualified and fully insured

Local recommendations

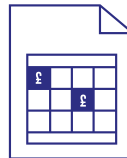
Free, no obligation quotations

Reliable, skilled, friendly

t 01483 222830

m 07721 455554

e [zoeyhackney@btinternet.com](mailto:zoeyhackney@btinternet.com)



# MSBOOKS

**Do you need help with  
your accounts and tax return?  
I offer a professional and friendly  
service to local businesses.**

- + VAT returns and MTD
- + Bookkeeping to include
  - Bank reconciliations
  - Invoicing
  - Petty cash and expenses
  - Self Assessment tax return

Call Mark on **07735 700 037** or  
Email [Info@MSBooks.co.uk](mailto:Info@MSBooks.co.uk)

 **XERO ADVISOR  
CERTIFIED**



# What's on this month

November &  
December 2020

## November & December 2020 at Burpham Church



Everything looks different in 2020 and so our Christmas events will have a very different feel this year:

*Every Sunday 10.00am*

### Gathered Communion Service at the Church of the Holy Spirit

Streamed Celebration Service – access via [www.burphamchurch.org.uk](http://www.burphamchurch.org.uk) or via our Burpham Church YouTube Channel.

*Sundays Fortnightly 4.00pm  
(Nov 1st, 15th, 29th, Dec 13th)*

### Messy Church at the Church of the Holy Spirit

An opportunity for families with under 11s to join for craft, bible story, activities and music for 45mins. Booking essential, contact [nicky@burphamchurch.org.uk](mailto:nicky@burphamchurch.org.uk)

### Special Events:

*Sunday 8th November*

### An Act of Remembrance at St Luke's War Memorial

**10.45-11.05am** To attend in person please contact the church office 01483 825533 / [office@burphamchurch.org.uk](mailto:office@burphamchurch.org.uk) to book your space (please remember to wear a mask). As there will be limited space, this will also be streamed, so do join online via Burpham Church YouTube Channel

*Sunday 29th November*

### Advent Christingle Event

**4.15-5.15pm** This will be a combination

of pre-ordered **Christingle in a Bag** (all items included to make your own at home), with a streamed Service at 4:15pm followed by the option to gather in St Luke's churchyard at 5pm to light the Christingles together. (Following all current COVID regulations). Please contact the church office **01483 825533** or [office@burphamchurch.org.uk](mailto:office@burphamchurch.org.uk) to order your **Christingle in a Bag** and book your space at St Luke's.

*Sunday 20th December &  
Thursday 24th December*

### Nativity Trail

This will be a nativity trail around Burpham following the Christmas story with exciting things to see and do on your journey at a time to suit you and your family. Please register your participation with the church office **01483 825533** or [office@burphamchurch.org.uk](mailto:office@burphamchurch.org.uk) (please note this will replace our regular nativity service in these unusual times) .

*Sunday 20th December,  
Tuesday 22nd December,  
Thursday 24th December*

### Pause for Christmas

**6.00-7.00pm** at the Church of the Holy Spirit. An opportunity to pause and reflect on the powerful message of Comfort and Joy that Christmas offers – needed more than ever this year. Pre-booking essential via the church office **01483 825533** or [office@burphamchurch.org.uk](mailto:office@burphamchurch.org.uk). This will also be available as a streamed event for those who would rather participate at home.



### Burpham Evening WI

Whilst we have not been able to hold our Village Hall meetings during the current pandemic we have been able to enjoy 'virtual' meetings, including speakers, via 'Zoom'. Members have shared recipes, face mask patterns, photos, quizzes and tips for keeping busy. Initially our Book Groups and coffee mornings met on-line but during the summer months we have 'socially distanced' in members' gardens and met for coffee at Clandon Garden Centre. These get-togethers have given us a much needed morale boost. Although it has been lovely to use technology to keep in touch, it has been difficult for those members not on-line but we have mailed them copies of our newsletters and kept in touch by phone.

Details of when we will be able resume our meetings in the Village Hall safely will be posted on our website. If you would like further information about our WI, please email us.

**For further information:**

[www.burphamevewi.btck.co.uk](http://www.burphamevewi.btck.co.uk)

[f /burpham.eveningwi](https://www.facebook.com/burpham.eveningwi)

Or email us for more details:  
[burphamevewi@hotmail.co.uk](mailto:burphamevewi@hotmail.co.uk)  
*Continued over...*



**We must keep on protecting each other.**



**HANDS**



**FACE**



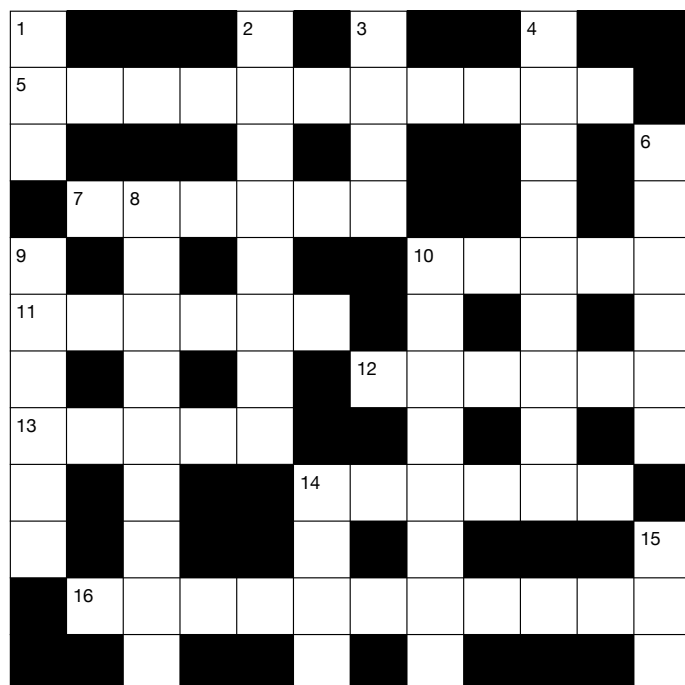
**SPACE**



**STAY ALERT • CONTROL THE VIRUS • SAVE LIVES**

**Do you have any events happening in and around Burpham & Jacobs Well that you would like added in the next issue?**

Our next issue of Burpham Pages will cover January & February 2021. If you would like your event, happening during this period, added to our 'News & events' or 'What's on this month' sections please e-mail the details to [editor@burpham-pages.co.uk](mailto:editor@burpham-pages.co.uk) before **7th December 2020**.



## Across

- 5 Formal request to an authority (11)
- 7 Social system of western Europe in the Middle Ages (6)
- 10 Reddish-brown colour of old photographs (5)
- 11 Of or pertaining to ozone (6)
- 12 Written text of a play or film (6)
- 13 English country house near Sevenoaks in Kent (5)
- 14 Distant control (6)
- 16 Simon & Garfunkel went to this fair in 1966 (11)

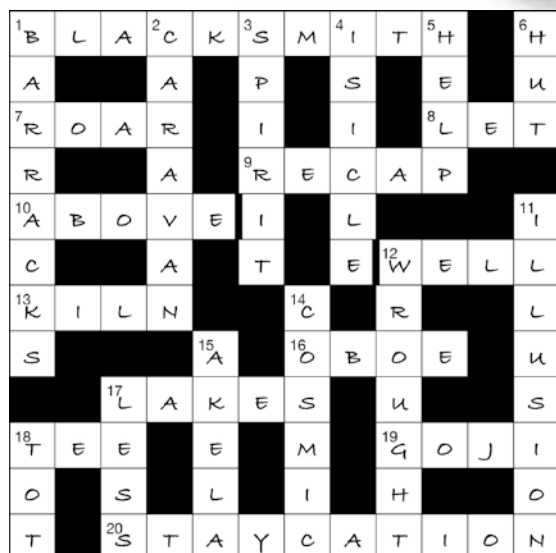
## Down

- 1 Peter who defies Hook (3)
- 2 Animals and other living things (8)
- 3 Ancient region in Western Europe (*Clue*\*) (4)
- 4 Area occupied or affected by something (9)
- 6 Said to be 'in the eye of the beholder' (6)
- 8 Social science of how we interact with things of value (9)
- 9 A missile or spacecraft (6)
- 10 Tree with winged seeds (8)
- 14 Long flowing outer garment for ceremonial occasions (4)
- 15 Nervous or timid in the company of others (3)

## Solution to Crossword No. 13

Burpham Pages issue No. 88  
September & October 2020

The solution to each crossword will be published in the following issue of Burpham Pages as well as on our website [www.burpham-pages.co.uk](http://www.burpham-pages.co.uk)  
For the November – December 2020 solution please see our January – February 2021 issue.



## Naomi Kefford Counsellor

*Dip. Couns., B.A.(Hons), MSc (Psychology), MBACP*

### Are you experiencing difficulties in coping with life because of:

depression, anxiety, stress, panic attacks,  
bereavement, other loss in personal or work life,  
low self-esteem, relationship difficulties?

### Counselling can help:

**Since the 'lockdown', I have been working  
via telephone and secure video link.**

*Email or phone me to chat through the options, your first  
session is discounted to see if you think this may work for you.*

Sessions available daytime,  
evenings & weekends.

Text or call **07881 945779**

E: [naomikefford@gmail.com](mailto:naomikefford@gmail.com)

[www.naomikeffordcounsellor.com](http://www.naomikeffordcounsellor.com)





# What's on this month

November &  
December 2020

## Guildford Walking for Health



**Guildford Walking for Health offers free guided short walks** in all weathers

(except very icy), year-round. All abilities welcome. All walks are led by trained volunteer walk leaders.

**The FREE Ramblers Walking for Health 1-hour walks have restarted.**

**New walkers need to pre-register to attend a walk** (for track and tracing purposes).

Visit the Walking for Health webpage: [www.walkingforhealth.org.uk/walkfinder/south-east/guildford-walking-for-health](http://www.walkingforhealth.org.uk/walkfinder/south-east/guildford-walking-for-health) to register.

Contact Annelize Kidd at [guildfordwfh@outlook.com](mailto:guildfordwfh@outlook.com) or 07554 423010

## University of the Third Age



**Guildford Area U3A** is an organisation for those who are of retirement or semi retirement age. It offers a range of indoor and outdoor activity groups ranging from tennis and walking to languages, literature, technology and music (*Note: many of the music groups are still unable to meet due to COVID-19 restrictions.*) We are now meeting 'face to face' – some are outside activity groups and other groups are meeting in large halls.

For a small annual subscription members can join as many of the 100+ groups on offer as they like.

We are following Government and The Third Age Trust guidelines, where social distancing and keeping people safe are key.

For those groups unable to meet in person, there are 'zoom' meetings and we offer training and support for those unfamiliar with the channel.

U3A is a charitable organisation run through a band of volunteers. It offers the opportunity to make new friends, meet with like minded people and keep learning, active and above all to keep smiling.

If you have time on your hands, are keen to brush up on new skills or just need company in the new 'normal', then come and join us – we're thriving on a challenge, we're all learning together and we seem busier than ever!

You'll find us at:  
[www.u3asites.org.uk/guildford](http://www.u3asites.org.uk/guildford)

Contact us  
[membership@guildfordu3a.org.uk](mailto:membership@guildfordu3a.org.uk)  
or call 01483 222572

Advertise your company,  
service or event in

## Burpham Pages + Stoughton Pages

Our community magazines help locals learn about their surroundings and discover interesting events. As a local business, you will get your ad in front of a passionate crowd that is already interested in who you are and what you have to offer.

When you advertise in a community magazine, such as **Burpham Pages** or **Stoughton Pages**, local people instantly become familiar with your company and therefore the benefits of being a long term advertiser are far more rewarding than a one off.

Our magazines reach approximately 6,900 homes & businesses in Burpham, Jacobs Well & Stoughton.

E-mail [info@burpham-pages.co.uk](mailto:info@burpham-pages.co.uk)  
or call 07597 904755

[www.burpham-pages.co.uk](http://www.burpham-pages.co.uk)  
+ [www.stoughton-pages.co.uk](http://www.stoughton-pages.co.uk)

## Mandy Hilton Fully Qualified Mobile Hairdresser

Mandy is a Guildford based mobile hairdresser with many years of experience.

Fully qualified and fully insured.

**No more high street prices.**

I will come to you in the comfort of your own home wearing full PPE during these pandemic times.

All aspects of hairdressing are undertaken using high quality L'Oréal products.

Please contact me for advice and appointments on  
**07811 013894** or **01483 235970**  
Email [mandydawnhilton@gmail.com](mailto:mandydawnhilton@gmail.com)

## accountancyfirst

- Companies • Self-Employed
- Tax Returns • New Businesses

**Now's the time to start thinking  
about the tax return deadline  
at the end of January 2021.  
I can help.**

**Starting a new business?  
I can provide all of the  
services you need.**

**John Beard** MAAT FCCA  
I am an experienced accountant based in Guildford.  
I offer a personal tax and accounts service to  
individuals and businesses.

Call **07801 144470**  
[Johnbeard@accountancy-first.co.uk](mailto:Johnbeard@accountancy-first.co.uk)  
[www.accountancy-first.co.uk](http://www.accountancy-first.co.uk)

John Beard is licensed and regulated  
by AAT under licence number 100445

**aat** AAT Licensed  
Accountant



**SHALES**  
Electrical

**Thomas Shales**  
**Domestic Electrician**  
Servicing Guildford and the surrounds

For all domestic needs, including (but not limited to):

**Internal & external lighting | House rewires**  
**Fault finding | Additional plug sockets**

Contact us now for a free, no obligation estimate

[tshales@hotmail.co.uk](mailto:tshales@hotmail.co.uk)  
[www.shaleselectrical.co.uk](http://www.shaleselectrical.co.uk)

Contact Rebecca on:

**07763 585256**



"Tom has been great! He has been installing new lights in our home  
and he's done a fantastic job so far. He's efficient, focused and  
hard working. Would highly recommend." Kat & Oli, Guildford

**FULLY INSURED**

— EST. 1980 —

## SURREY CLEANING SERVICES



**Specialist in Hard Floor Cleaning,  
Carpet & Upholstery Cleaning  
& Wood Floor Restoration Services**

*A family run business providing cleaning services  
in Surrey and surrounding areas*

**01483 566802**  
[www.surreycleaningservices.co.uk](http://www.surreycleaningservices.co.uk)

# What is it that you feel you need right now?

In a world that seems to be becoming more uncertain and more polarised by the minute, it is hard to know where life is going and what lies ahead.

**I can't ever remember a time when the future of the whole world seemed so up in the air. It feels like we are only one small step away from complete global chaos. Perhaps that sounds over dramatic, but as COVID restrictions continue to build once again here in the UK it is the experience of many people who simply don't know what to do and where to turn.**

You might be the kind of person who is brilliant at rolling with the punches – you might have taken 2020 in your stride, or you might be someone who is metaphorically hiding under the duvet and will only emerge when everything seems “normal” again, whatever that might be.

Our church community has been hugely impacted just like everyone else. We'd love to meet again freely. We'd like to shake hands and hug! We'd like to sit next to people. We'd like to sing in a big group – well most of us would anyway!! Our current situation is strange and uncomfortable. It's tempting just to complain about all the things we can't do and how annoying and difficult it is to manage with the restrictions.

And yet... And yet, there are many things that we *can* do. We *can* meet online, we *can* meet in person in groups of up to six. About 35 people *can* meet in our building for worship. And that

means that there are so many things we *can* do. I don't know about you, but it's taken me a while to stop thinking about all the things I *CAN'T* do, and start focusing on the new things I *CAN* do!

**We'd love to meet again freely. We'd like to shake hands and hug! We'd like to sit next to people. We'd like to sing in a big group – well most of us would anyway!!**

When we were building the new extension on our building in 2013, it was a safety requirement that we had to put some markings on the glass of our foyer windows and doors. The architects suggested some designs or symbols. We chose to write...

**love hope peace joy faith**

around our building. Those words convey something that God offers to

us at all times and in all situations, even in the chaos and insanity of 2020. Maybe they feel like impossible things for you right now, but it is my firm belief that we can discover these things for ourselves today whatever difficulties and wrestles we face.

As we move towards the Christmas period perhaps you will feel the pull of what Jesus offers as recalled in the Christmas Carol 'God Rest Ye Merry Gentlemen'.

**Please do contact us directly if you would like us to help you discover these things for yourself in these difficult times. We'd love to connect whether in person or online!**

With every blessing  
**Revs James & Jo Levasier**

[james@burphamchurch.org.uk](mailto:james@burphamchurch.org.uk)  
[jo@burphamchurch.org.uk](mailto:jo@burphamchurch.org.uk)



**BURPHAMCHURCH**  
SHARING THE GOOD NEWS OF JESUS

Church Office: 01483 825533  
[www.burphamchurch.org.uk](http://www.burphamchurch.org.uk)



Welcome to the **Burpham Community Association**

# Community Update

November & December 2020

## Sainsbury's Loading Bay

**In September, Sainsbury's lodged an application to enlarge their loading bay to accommodate a parking area for delivery vehicles. It proposed to build on the wooded area to the north of the store, as shown in the diagram on the right.**

The BCA opposed this application on two main grounds; the inevitable increase in noise that would disturb nearby properties and the encroachment into a **Local Green Space** that will result in the loss of 60+ trees.



## What are Local Green Spaces?

**Let Jim Allen of the Burpham Neighbourhood Forum begin the story:**

*I discovered something as I walked every street in Burpham when taking photos for the Appendices on Character that would be included in the Burpham Neighbourhood Plan – can you guess? Well, the answer is trees. I noticed that every property in Burpham can see a tree from its windows. The result of this discovery led to Policy B-EN3 in the Neighbourhood Plan which outlines 20 green spaces in the Ward. These are now official Local Green Spaces, shown on the map below. The Plan states:*



*“The spaces are designated under the NPPF designation as ‘**Local Green Space**’. Some are less than a few square metres. Others are ribbons no more than a few metres wide running into and around the community, while some are larger but none is an extensive tract of land. Each contributes a benefit to the community such as recreation, a pleasant walk way or thoroughfare or enjoyment of nature. The individual sites shown on the map form their*

*own very special function within community life, either providing recreation, and/or nature conservation.”*



### BCA on Facebook & Twitter!

Join the conversation! Open to members and non-members, it's a great way to stay up-to-date with everything that's happening in our community.

 [twitter.com/burpham\\_c\\_a](https://twitter.com/burpham_c_a)  
 [facebook.com/burphamCA/](https://facebook.com/burphamCA/)



### Guildford Community Lottery

A way for everyone to support local causes and be in with a chance to win prizes of up to £25,000. **50% of all tickets sold from our page go to the BCA!**

Tickets only cost £1 per week, buy now at [www.guildfordlottery.org/support/burpham-community-association](https://www.guildfordlottery.org/support/burpham-community-association)



To get in touch with the BCA: Contact the secretary on [secretary@burphamca.org.uk](mailto:secretary@burphamca.org.uk) call **01483 567791** or visit the website at [www.burphamca.org.uk](http://www.burphamca.org.uk)

We represent the community of Burpham, Guildford

## Why are Green Spaces so Important?

**The most obvious reason is that they provide a habitat for a variety of wildlife – birds, animals, fish, amphibians and a huge variety of insects, vital for pollination.**

There is growing concern at the decline in pollinating insects as so many of our food plants depend on it. The green spaces also provide wildlife corridors to link habitats. Trees and shrubs help to prevent soil erosion, take up water which improves drainage, and absorb pollutants. They can also help to reduce noise pollution.

Green spaces provide areas for recreation – places to play, walk the

dog, meet friends, enjoy watching the wild life or just sit and meditate. If you have never been there, try the Riverside Park and Nature Reserve – it's a wonderful place to do all of these.

**If all that is planned by Guildford Borough Council, Surrey County Council and the government, comes to fruition, Burpham will be surrounded by thousands of new homes.**

If all that is planned by GBC, SCC and the government, comes to fruition, Burpham will be surrounded by thousands of new homes. The

BCA, and the BNF are determined to ensure that our green spaces remain intact; if one is allowed to be built on, a very dangerous precedent will have been created.

One thing all of us can do to maintain our green spaces is to keep them free of litter. We are looking at the possibility of extending the Community Support Group to help with this by providing volunteers with appropriate equipment.

If you feel this is something you could do, perhaps while walking the dog, please get in touch with our Membership Secretary, by emailing [membership@burphamca.org.uk](mailto:membership@burphamca.org.uk)

## Winter is nearly upon us



With no end in sight to the Covid-19 restrictions, there will be no further meetings or our Christmas Social this year. We hope you will have a good Christmas and that the New Year brings better times.

The BCA has worked with Burpham Church to ensure that any resident in need of help or support due to Covid-19 can get it by calling **07880 586455**, emailing [support@burphamca.org.uk](mailto:support@burphamca.org.uk) or contact the Secretary.

**Help by joining the Burpham Community Association today!**

*NB We never share your data or use it for any purpose other than informing you of BCA activities.*

Subscriptions are £8 per household or £4 per single occupancy and run from January to December. Join now or renew your membership for 2020.

**You can pay by:**

**Direct Debit** – visit our website at [www.burphamca.org.uk](http://www.burphamca.org.uk) which has a link to this system – an email to [treasurer@burphamca.org.uk](mailto:treasurer@burphamca.org.uk) giving your details would be helpful.

**Online –**

**Account name:** Burpham Community Association.

**Sort Code:** 40-22-26.

**Account Number:** 41049194

To help the Treasurer please identify yourself using initials, surname and the first line of your address.

Please contact Liz Turner, our Membership Secretary, if you have any queries. Her email address is [membership@burphamca.org.uk](mailto:membership@burphamca.org.uk)

## Andrew F Wye Limited CHARTERED ACCOUNTANTS

A Burpham resident, I have over 30 years of experience dealing with completion of accounts and tax returns.

- Personal self-assessment returns
- Limited Company & LLP accounts and tax returns
- Real time filing for MTD VAT returns and payroll / CIS returns

If you would like more information or to arrange a meeting to discuss how we can help you, please call

**01483 420039 or 07776 250454**

Email [andrew@andrewfwye.com](mailto:andrew@andrewfwye.com)

Visit [www.andrewfwye.com](http://www.andrewfwye.com)

Our office is at:  
4 Beaufort Parklands,  
Railton Road, GU2 9JX.



NO CALLOUT FEE/FULLY INSURED

*"The Mobile Handyman"*

FOR ALL YOUR DIY &  
PROPERTY MAINTENANCE  
REQUIREMENTS

Electrical Services  
Plumbing  
Brickwork Repairs  
Carpentry  
Shed Repairs and Shed Roofing  
Ceramic Tiling  
Jet Washing  
Painting & Decorating  
Flat Pack Furniture Assembly  
Decking Maintenance and Repair  
Lock Changing

T: 07710 134670

E: [contact@mobilehandyman.co.uk](mailto:contact@mobilehandyman.co.uk)



All aspects of roofing and building work undertaken



### All types of Bricklaying

Extensions, Patios & Driveways,  
Garages, Block Paving, Garden Walls,  
Re-pointing, Fencing & Landscaping



### All types of Roofing

Roof Cleaning, Flat Roofs, Tiling, Chimneys,  
Soffits & Facias, Lead Work & Guttering,  
Clean Guttering, Patio Cleaning



### All types of Jet Washing

Paths, Patios, Driveways,  
Roofing and Guttering

**For free estimates and advice call...**

Tel: 01483 810434 Mob: 07385 168495 Email: [j.fbuilders8379@gmail.com](mailto:j.fbuilders8379@gmail.com)

# Baking for Christmas

Get into the festive spirit by making these crunchy, ginger-spiced snowflake biscuits, filled with Bonne Maman's heavenly fruit conserves – we used Strawberry, Raspberry, Apricot, Mirabelle Plum, Blackcurrant and Fig – and beautifully decorated them with icing.



The biscuits can be made ahead and frozen ready to be brought out as Christmas nears to be baked and iced in lots of different, creative ways – a lovely activity to enjoy with all the family.

Arrange your biscuits on a board or plate and they will make for a gorgeous presentation for a festive gathering.

## Ingredients

25g unsalted butter, diced  
25g Demerara sugar  
50g golden syrup  
½ tsp mixed spice  
½ tsp finely grated fresh ginger  
½ tsp bicarbonate of soda  
15ml beaten egg  
125g plain flour  
About 10 tbsp Bonne Maman conserve of your favourite flavours  
125g white fondant icing  
125g Royal icing sugar

## Method

- 1 Place the butter in a large bowl. In a saucepan, stir together the sugar, syrup, spices and ginger and bring to the boil. Add the bicarbonate of soda (it will puff up) and pour the hot mixture over the butter. Stir until the butter has melted.
- 2 Beat in the egg and slowly blend in the flour. It will look as though there is too much flour but it will blend in. Knead the dough in the bowl until smooth then wrap in clingfilm.
- 3 Using a quarter of the dough at a

time roll the dough out between two sheets of baking parchment, to about 3mm thickness. Use a variety of Christmas cutters to stamp out about 24 biscuits of varying sizes. Remember you will need two of each size, to sandwich together. Re-knead and re-roll the trimmings.

- 4 Lay the biscuits out on baking sheets, lined with baking parchment. Stamp out the centre from half the biscuits to create the space for the conserve. Chill the biscuits for a good hour before baking.
- 5 Heat the oven to 170°C, 150°C fan, gas 3. Bake the biscuits in batches until golden and crisp. They will take between 7 and 10 mins, depending on size. Cool on a wire rack.
- 6 While the biscuits are cooling, roll out the fondant icing on a surface dusted lightly with icing sugar and stamp out 3 or 4 snowflakes, using the same cutters. Stamp out the centres, using the same round cutters. Brush the top biscuits with a little conserve and lightly press on the matching icing.
- 7 Brush all the base biscuits lightly with conserve and press on the top biscuits. You should now have about 12 snowflake biscuit sandwiches of various sizes, some iced with fondant and some plain.
- 8 Put the Royal icing sugar in a bowl with 20ml of cold water. Gradually beat the icing until it forms a stiff

but pipeable paste. Spoon into a piping bag with a small nozzle and pipe or drizzle icing across most of the biscuits to resemble snowflakes. Leave the icing to set for 10 minutes. Fill the biscuit centres with various flavours and colours of Bonne Maman conserve. Store the biscuits in airtight containers until ready to use.

## Cook's tips

If you don't have cutters, draw simple snowflake outlines on stiff card and cut out. These templates can be used to cut out the biscuit and icing shapes.

The biscuit shapes can be frozen if you don't have time to bake the same day. Allow an extra 1-2 minutes cooking time. The baked biscuits can be frozen or kept in airtight containers until you're ready to assemble and ice them.

If you don't want to pipe the icing, spoon it into a strong plastic food bag and push it down towards one corner. Twist the bag and snip a small opening from the corner. Squeeze out the icing and simply drizzle it across the snowflakes.

For more recipe ideas visit:  
[www.bonnemaman.co.uk](http://www.bonnemaman.co.uk)  
Facebook: @bonnemamanuk  
Instagram: bonnemaman\_uk



# Weybrook Park

Moira MacQuaide's history of Burpham

Today a popular residential estate, the area known as Weybrook Park was originally part of the forest that covered Surrey before being encompassed in local farm land. Now we see some of the few remaining areas of green space in the area subject to local concern.

Image from Google Earth

**This area of Burpham is currently in the local news, due to the planning application by Sainsbury's to extend their building by cutting down over 60 trees in the neighbouring copse. There have been many objections to this, but perhaps this is a good time to look back at the history of the area.**

In the 12th century, King Henry II reduced the whole of Surrey to the state of a forest, part of the Royal Forest of Windsor, but over the next few centuries the woodland disappeared as smallholders and farms took its place. Most of the Tudor buildings still in the area were part of large farms. The earliest map showing details of woodland is the Tithe Map of 1838, and you can see the area called The Coppice, which looks like a three pronged fork, of woodland around the



fields that became Bower's Farm. The land between Burpham Court Farm and London Road, and between the Wey Navigation and Burpham Lane, was farmed by William Francis Pimm, who lived at Marlyn's, during the early 19th century. He owned some of the land, but leased other parts, including this

area, from the Earl of Onslow. William died in the 1840s and over the next 40 years the farmland was split up.

Bower's Farm was first mentioned by name in the 1881 census and during the following years was farmed by Thomas Slaughter, George and Percy Gatley, Leo Keene and his daughter Dorothy Jones. By 1913 much of the woodland had disappeared, including the three prongs, leaving only the triangular plot behind the current store. There were planning applications in the 1960s for residential developments on the farmland, and both Sainsbury's and Asda had an interest in the land. In 1982, the Surrey Advertiser reported that an American property company owned the land, having bought it from the Getty Estate in 1980. Eventually Sainsbury's won the battle of the supermarkets. In 1984 there was an agreement between Guildford Borough Council, J Sainsbury plc and New Ideal Homes Ltd. Sainsbury's appeared to own the land and the property developers purchased those parts not designated for the supermarket – including the copse beside the current store. A planning proposal by

Sainsbury's in 1982 included plans to have a garden centre and Homebase store on the same site. The new store opened in 1985 and was extended to include a petrol station later on.

Most of the trees currently around the Sainsbury's store are probably not the original ones, but they play a central part in protecting natural habitats, improving the environment and cutting out noise for local residents. Green spaces are important to modern day living and history shows that this area has always had its woodlands.



(Top) Bowers Farm 1869 OS Map

(Bottom) Bowers Farm 1913 OS Map

If you are willing to share your memories and/or photos to tell us more about Burpham then please contact Moira MacQuaide, either by e-mail ([moira.macquaide@gmail.com](mailto:moira.macquaide@gmail.com)) or by phone or text (07963 756543). My two books ('The History of Burpham Primary School' and 'Burpham – A Gateway to Guildford') are still available from me for £10 (free delivery locally) or on Amazon.





The small, local, friendly, **GREAT VALUE** garage.

**Specialists in Audi, Volkswagen, Seat  
and Skoda Vehicles.**

**IMI Certified for Electric and Hybrid  
propelled Vehicles.**



**Servicing & Repairs according to manufacture guidelines**

- Engine management diagnosis.
- Full Vehicle health checks.
- Replacement Genuine Keys.
- Work carried out using only Genuine Parts.
- Air conditioning service and diagnosis.
- Advanced Driver Assist System ( ADAS ) Calibration.
- Component Protection Removal.
- Software updates and much more!

**Free Loan Car**

Available while we work on your car.



**What ever your needs you can count on us!**

**Tel:** 01483 285792

**Email:** [info@ct-cars.co.uk](mailto:info@ct-cars.co.uk)

**[www.ctcars.co.uk](http://www.ctcars.co.uk)**

Find us on

**Where to find us**

Open View Farm, Epsom Road,  
West Horsley, Surrey. KT24 6AP



**Trinity Homecare**  
Supporting life's journeys



## Supporting life's journeys with local heartfelt homecare

From one hour a week to full-time live-in care, our **local award-winning** care services are **completely bespoke** to help you or your loved one **live safely and confidently at home**.






Inspected and rated

Outstanding



- Bespoke and heartfelt care
- Peace of mind for you and your loved ones
- Maintain your independence
- Enriched quality of life
- Providing care locally to you in Surrey & Hampshire

**Call 01483 604 887 or visit [www.trinityhomecare.co.uk](http://www.trinityhomecare.co.uk)**



**High Quality Home Care  
and Nursing Services**

**Our Mission is to deliver the highest standard of Home Care and Nursing Services with enthusiasm and expertise in Guildford and surrounding villages**

**We are dedicated to providing consistent and reliable care in order that our clients have confidence that their needs are being met with respect and dignity**

**Whenever possible we believe in  
'HOME CARE not a CARE HOME'**

170 Epsom Rd, Guildford, GU1 2RP  
Tel: 01483 536266  
Web: [www.everycare.co.uk/centralsurrey](http://www.everycare.co.uk/centralsurrey)

## CMI Associates

CHARTERED BUILDING SURVEYORS

Creative Design Solutions



- Architectural Design
- Planning / Building Reg. Applications
- Residential Extensions
- Loft Conversions
- Garage Conversions
- Party Wall Advice



**01483 565500**

[www.cmiassociates.co.uk](http://www.cmiassociates.co.uk)

Unit 1, 69-71 Burpham Lane,  
Guildford, Surrey GU4 7NB



## Mayhews Property Services

Improvements  
and maintenance  
inside and out

- Painting
- Tiling
- Kitchens
- Door hanging
- Lock changing
- Flat pack assembly
- Carpet cleaning
- Fencing
- Decking
- Patios

...and much more

T: 07832 368951/01483 493962 (evenings)  
mayhewspropertyservices@gmail.com



- Additional sockets
- Replacement lighting
- Outside supplies and lighting
- Security lighting
- Safety and maintenance checks
- Smoke alarm installations
- Extension and new build installations
- Full or Part rewires

*All electrical matters considered  
No job too small • No call out fee  
Free estimates • Fully insured*

**ELECSA**  
PART P REGISTERED



Contact Keith Harrison  
Tel: 07707 686222 / 01483 600727  
Email: a3homeelectrics@googlemail.com  
www.a3homeelectrics.com  
Epsom Road - Guildford - GU1 2RP



### All types of Bricklaying

Extensions, Patios & Driveways, Garages  
Block Paving, Garden Walls, Re-pointing



### All types of Roofing

Flat Roofs, Tiling, Chimneys,  
Soffits & Fascias, Lead Work & Guttering,



### All types of Landscaping

Fencing & Landscaping



### All types of Jet washing

Roof Cleaning, Guttering Cleaning,  
Patio Cleaning

Long standing family-run business in Burpham.  
Local references available.

**Checkatrade.com**  
Where reputation matters

**01483 538531**

**07836 782422**

**Email: afbbuilders@hotmail.co.uk**

**www.afbbuilders.co.uk**

---

# Lightening Your Digital Footprint

---

Written by Ali Fisher

Let's be honest, it's not been the year for socialising. A friend recently sent me a meme with a picture of a bin inscribed with '2020: The year the bin went out more than me'. I thought it was very apt. For most of us, it's been the year for being on-line. During the April national lockdown, the UK's internet usage surged to record levels, as we went online for work, socialising, exercising and entertainment, like never before.



All this digital activity is leaving a growing carbon footprint on the planet. If you add up all the carbon emissions from our tech gadgets, our use of the internet and the systems supporting them, it would account for around 3.7% of our global greenhouse gas emissions. That's about equal to the global emissions of the airline industry. There's lots to be gained if we can lighten our digital footprint.

---

**Add up all the carbon emissions from our tech gadgets, our use of the internet and the systems supporting them, it would account for around 3.7% of our global greenhouse gas emissions.**

---

What action can we take as we head into winter and, in current circumstances, are more likely than ever to be connecting online for work and social? Given digital emissions are less obvious (generally there's no smoke piling out the back of your laptop or TV), we probably need to be a bit more planned to kick start this behaviour change.





### 1 Switch to renewable energy

Being online requires electricity. Check to see how much of your energy supply is coming from renewables, like wind and solar. If you don't like the answer, consider switching to one that is 100% renewable. Have a look at [www.bigcleanswitch.org](http://www.bigcleanswitch.org) to compare options.

**Being online requires electricity. Check to see how much of your energy supply is coming from renewables, like wind and solar.**

### 2 Less is more with emails

Apparently, we are guilty of sending 64 million unnecessary emails in the UK every day! If every adult in this country sent one less email a day, it would save the equivalent carbon emissions of 80,000 flights from London to Madrid.

### 3 Delete from storage

Nearly a quarter of our digital energy consumption comes from data storage so don't be afraid to have a regular clear out of emails, junk mail, trashed mail, folders, attachments, unused apps & surplus photos.

### 4 Unsubscribe today

Have you checked your junk mail recently? Might be worth a peak. Likely there are emails you subscribed to yonks ago and keep getting without even realising it. Most companies make it easy to unsubscribe these days so go ahead and have a good purge of the spam folder. It can be quite therapeutic.

### 5 Love your tech

Over half the carbon footprint of the information and tech industry sits in the end-user devices, from the mini tech we hold in our hands to the bulkier tech hogging our desk space. If we can take care of them – protective cases & screens, good maintenance and trying not to lose them – and resist the temptation of constant upgrades, then that might just be our biggest contribution to reducing our digital carbon footprint.

**If every adult in this country sent one less email a day, it would save the equivalent carbon emissions of 80,000 flights from London to Madrid.**



### 6 Unplug overnight

Charge your phone before bed. The average mobile takes 2 hours to charge – not the whole night! By leaving phones charging overnight we could be charging for 3-4 times longer than needed. Talk about an easy win! Plus it might stop that cheeky last look at your phone before bed which is never a night-time soother.



### 7 Pick up the blower

If you're not needing to meet with multiple people online or presenting, try swapping out some of the video calls for the old fashioned phone. As a bonus you can be more mobile with it. Take a walk and get some fresh air or just stand up and stretch. The climate will thank you for the lighter carbon footprint of a call over conference technology.

### 8 Don't stand-by, switch off

After a long day/night's work, your screens deserve a proper switch off and recharge so make sure you hit the off switch. Three quarters of

Don't stand-by, switch off

**Games consoles switch to idle mode when not in use which consumes almost as much power as when in use.**



Image by Octavian Dan at Unsplash

us say we leave electrical items on standby. Tut-tut! On average, we are wasting £80 a year by being on standby rather than switching off. If you're struggling with this challenge, start with the worst offenders. Games consoles switch to idle mode when not in use which consumes almost as much power as when in use.

## 9 Website weight

If you run your own website or know someone who does, you can likely reduce the digital burden of your website by reviewing page weights. Video files and gifs can be especially heavy. It's also worth checking if your website host runs on renewable energy.

Before we beat ourselves up too much for our increasing screen time, technology is saving us many emissions too. There is a definite

upside so, like many things, it's a balancing act. Last year, Zoom calculated that it's top ten clients saved 685,000 metric tonnes of CO2 in just 3 months – that's the equivalent of planting 11 million trees, and that was before Covid-19 hit.

So, as we hunker down for the winter, let's crack on with our digital spring clean. Let's start with cleaning out our digital cupboards from emails to files and photos; let's lessen our email obsession; let's check that we're running on renewable where-ever we can; let's get off the screen and pick up the blower more often; let's unplug and unsubscribe.

Technology is here to keep us connected. Let's use it as effectively and efficiently as we can. Let's embrace all the opportunity it has to offer whilst doing so with the very lightest of digital footprints.

*Ali Fisher lives in Burpham. She supports businesses and brands to help build a more sustainable future. [PlansWithPurpose.co.uk](http://PlansWithPurpose.co.uk)*

EST.  2014

**BEECH & SON**  
CONSTRUCTION & LANDSCAPING

**Specialising in:**

- Brickwork/Blockwork • Patios
- Soft/Hard Landscaping
- Groundworks • Turfing • Concreting
- Tarmacadam/Asphalting

For further information  
please contact us:

**☎ 07961 051 633**

✉ [bandsconstruction@yahoo.com](mailto:bandsconstruction@yahoo.com)



**MANDIRA'S**  
KITCHEN  
QUINTESSENTIALLY INDIAN



**Award Winning Indian  
Freezer Meals delivered  
to any UK address. Freshly  
made with local produce  
with no unpronounceable  
bits. Ready in 4 minutes  
from frozen. Order online  
or pick up from our shop**

**[www.mandiraskitchen.com](http://www.mandiraskitchen.com)**

*Our Christmas gift to you*  
**25% OFF Selected Ranges**



- Home delivery in 3 working days
- Range of finishes
- Selected stock
- Free assessment

**For Your Office or Home Office**

01483 600085 / [sales@healthy-homeoffice.co.uk](mailto:sales@healthy-homeoffice.co.uk)

[www.healthyhome-office.co.uk](http://www.healthyhome-office.co.uk) / 3 Burden Way, Guildford GU2 9PB

**healthy  
home  
& office**

# Bramble Farm

THREE GENERATIONS OF JOY

# Farm

TURKEYS

“ Our family has been buying and recommending your wonderful turkeys for 54 years. ”

Fish Family, loyal customers for 54 years

Local farming since 1929



To order please visit [www.bramblefarm.co.uk](http://www.bramblefarm.co.uk)





**ALL  
WORK FULLY  
GUARANTEED**

**FREE  
ESTIMATES  
& ADVICE**



## **New & Old Roofs All Roofs Repaired**

Tiling & Slating Replacements • Gutter Cleaning & Replacements  
Flat Roofs • UPVC Fascia Boards • Soffits • Cladding  
Down Pipes • Gutting • Gutter Clearance • Chimney Restoration  
Apex Boards • Barge Boards • Re-pointing • Brickwork Repairs  
Moss Removal and Roof Cleaning

**For any enquiries please contact William Crittenden:**

*410 Lower Road, Effingham KT24 5JP*

*Newmarsh Farm, Horsley Road, Cobham Surrey, KT11 3JX*

**T: 01483 378334 M: 07470 088047 E: [info@weathersureroofing.co.uk](mailto:info@weathersureroofing.co.uk)**

**To view testimonials visit our website: [www.weathersureroofing.co.uk](http://www.weathersureroofing.co.uk)**

## **JENNIFER MARGRAVE SOLICITORS LLP**

- Wills, Trusts & Probate
- Lasting Powers of Attorneys
- Court of Protection matters
  - NHS funding issues
  - Non-mortgage related residential conveyancing

**Tel: 01483 562722**

The Old Post Office, 130 Epsom Road,  
Guildford, GU1 2PX



**Wills &  
Inheritance  
Quality**



E: [enquiries@jennifermargrave.co.uk](mailto:enquiries@jennifermargrave.co.uk)

***We advise on law but do much, much more!***

**[www.jennifermargrave.co.uk](http://www.jennifermargrave.co.uk)**

Authorised and regulated by the Solicitors Regulation Authority  
SRA No. 533213



**At The Guildford Spine Centre,  
we are experienced in treating a  
variety of muscle, joint and nerve  
pain including:**

**Back and neck pain • Sciatica  
Slipped discs (disc protrusions)  
Shoulder issues • Headaches  
Minor Sports injuries**

***Make your pain a thing of the past  
and book now.***

**50% off** New Patient First Visit Offer  
with this advert

**Tel: 01483 808 868**

**[www.spinecentreguildford.co.uk](http://www.spinecentreguildford.co.uk)  
44A London Road, Guildford, GU1 2AF**



# Burpham Gardening Club News

November & December

To join the club or our meetings call John Boon on 01483 874123

**Please note that all Club meetings remain cancelled until further notice due to the Covid-19 virus and the Rule of Six.**

The **Trading Hut remains closed.**  
If there is anything that you need please call 01483 874123.

## Things to do in the garden in November.

- Planting of Tulips should be completed by the end of this month.
- Cut down faded perennials leaving Penstemon and other late flowering perennials to continue flowering.
- Dahlias and Cannas should be lifted, dried and stored in a frost free place ready for planting next Spring, if they are being overwintered in the ground they should be covered with a mulch dressing.
- Apply an application of a mulch dressing to protect Agapanthus from the frost.

## Reduce the watering of houseplants.

- Half hardy Fuchsias and Pelargoniums should be cut back and brought undercover, reduce watering so that they remain dormant during the winter months.
- Amaryllis bulbs should be potted up for Christmas flowering.

- Bring potted Hyacinths into a light cool area once they begin to shoot.
- Reduce the watering of Houseplants.
- Now is a good time to plant Raspberry Canes, Fruit Trees and Bushes.
- Start the winter pruning of Apple and Pear trees.
- Aquadulce Broad Beans should be planted now to produce an early crop ahead of the Spring invasion of Blackfly.
- Garlic cloves can still be planted.
- Continue to rake leaves off of the lawn.

## Things to do in the garden in December.

- Indoor Azaleas should be watered frequently to prevent the dense root ball from drying out, rainwater is better than tap water.
- Poinsettias are a popular gift at this time of the year, they should be kept in a warm light place away from draughts, they do not like to be over watered. All other Houseplants should be kept in a bright place as winter light levels fall, on frosty nights do not leave them trapped between closed curtains and the window.

- Pinch out the tips of Sweet Peas sown in October to encourage bushy growth.

---

**Poinsettias are a popular gift at this time of the year, they should be kept in a warm light place away from draughts, they do not like to be over watered.**

---

- The vegetable plot should be cleared of all left over plant debris and lightly dug over to open up the ground so that the winter frost can get in and destroy bugs and diseases.
- Rhubarb crowns can be forced by covering them with dark bucket.

## Keep off of the lawn when it is frosty or very wet.

- Grape vines should be pruned before Christmas to prevent bleeding.
- Keep off of the Lawn when it is frosty or very wet.
- Insulate garden taps and exposed pipe work against extreme weather.

# Useful numbers

## Police

Call **101** for local police team

## Village Halls

**Sutherland Memorial Hall**..... 01483 300404

**Jacobs Well Village Hall**..... 07482 632144

**Burpham Village Hall**..... 07752 549313

## Local Councils & Councillors

**Borough Councillor** (Burpham)

George Potter..... 07411 005115

Ted Mayne..... 01483 565296

**Borough Councillor**

(Worplesdon & Jacobs Well)

Ruth Brothwell..... 01483 223571

Ann McShee..... 01483 825907

Bob McShee..... 01483 825907

**Worplesdon Parish Council**

(Jacobs Well)..... 01483 300094

**County Councillor**

(Guildford East – Merrow & Burpham)

Graham Ellwood..... 07899 846626

## Supermarkets

**Sainsbury's** (Burpham)..... 01483 50676

## Local Associations

**Burpham Community Association**.....

01483 567791

**Jacobs Well Residents Association**

(Secretary)..... 01483 577994

(Chair)..... 01483 822976

## Veterinary Surgeons

**Stocton Veterinary Centre**..... 01483 604308

**Alder Veterinary Practice**..... 01483 536036

## Chemists

**Boots Pharmacy** (Merrow)..... 01483 572421

**Lloyds Pharmacy in Sainsbury's**

(Burpham)..... 01483 566076

## Schools

**Burpham Primary School**..... 01483 572510

**George Abbot School**..... 01483 888000

## Sports Venues

**Sutherland Memorial Park**..... 01483 444718

## Hospitals

**BMI Mount Alvernia Hospital**.....  
01483 570122

**Royal Surrey County Hospital**.....  
01483 571122

**Nuffield Health Guildford Hospital**.....  
01483 555800

## Doctors

**Merrow Park Surgery**..... 01483 503331

## Churches

**Burpham Church** (St Luke's & The Church of The Holy Spirit)..... 01483 825533

## Local Charities

**Age UK Surrey**..... 01483 503414

**Challengers**..... 01483 230060

**Guildford Lions**..... 0345 833 2884

**Headway Surrey**..... 01483 454433

## Dentists

**Burpham Dental Care**..... 01483 561666

**Waterden Dental Practice**..... 01483 565290

## If you're thinking about equity release

### You'll need advice that's crystal clear...

Equity release is a way of releasing cash from your home while you still live in it. As whole of market advisers, we'll make sure that the different options are discussed to make sure you get the right product for you!

If you're aged 55 and over, you could raise the money for any purpose, which could include:

- **Maintenance to your property**
- **Holidays or cars**
- **Gift to family members**
- **Money to maintain your standard of living**



**CrystalClear**  
Financial Services



Call us for a no obligation chat: **01483 487417**

**equityrelease@crystalclearfs.com**

**www.crystalclearfs.com**

Equity release will reduce the value of your estate and can affect your eligibility for means tested benefits.



## FUNERAL DIRECTORS AND MEMORIAL STONEMASONS



### THE FAMILY YOU CAN TURN TO... DAY OR NIGHT

Seven generations of our family have been helping and advising local families in their time of need. For 240 years we have been providing funerals, both traditional or modern, with care and compassion.

#### BURPHAM

204 London Road 01483 615031

#### GUILDFORD

70 Woodbridge Road 01483 562780

Branches also in Woking and West Byfleet



[www.lodgebrothers.co.uk](http://www.lodgebrothers.co.uk)

Lodge  
BROTHERS 1780  
& Monk

Lodge  
BROTHERS 1780  
*the family you can turn to*

ASK ABOUT OUR  
PRE-PAYMENT  
FUNERAL PLANS



FPA  
FUNERAL  
PLANNING  
AUTHORITY  
REGISTERED

FUNERAL DIRECTORS • MEMORIAL STONEMASONS • FLORAL TRIBUTES  
PERSONALISED FUNERAL PLANS • WILLS & PROBATE





**Win an  
Annual Merlin  
Family Pass!\***

# **Light Up** Your Home This Christmas!

**Seymours Estate Agents and Woking & Sam Beare Hospice have come together to help bring a little cheer in your neighbourhoods this festive season with our 'Light up your Home' competition.**

We are inviting you to get creative this Christmas by lighting up your home to raise some money for this great charity. To make this more interesting we are offering some amazing prizes for the winning homes.

**To register or for more information visit  
[seymours-estates.co.uk/blog](http://seymours-estates.co.uk/blog)**

Ts & Cs apply

**Guildford**  
6 London Road, Guildford, GU1 2AF  
Tel: 01483 576833

**Burpham**  
5 Kingpost Parade, Burpham, Guildford, GU1 1YP  
Tel: 01483 300667

[seymours-estates.co.uk](http://seymours-estates.co.uk)



**Seymours**



**Woking & Sam Beare**  
Hospice and Wellbeing Care