

Local advertising and news magazine, delivered free to over 3,000 homes.
Includes Burpham Community Association newsletter.

Burpham Pages

January &
February
2022

Incorporating Jacobs Well

Sutherland Memorial Hall.

Following the lockdown hiatus the BCA have experienced difficulties in rebooking their usual venue.

The streets of Burpham.

Moir MacQuaide looks at the origins of the names of the roads, drives, lanes, ways and avenues of Burpham.

Smile for the camera.

For some people anxiety over their teeth means that they shy away from photographs. How healthy are our smiles?



Includes: Community Update from the Burpham Community Association

www.burpham-pages.co.uk

Do you find financial decisions a bit of a headache?

Get rid of the pain with Price Ferguson

Price Ferguson is a leading wealth management and financial planning firm based in Guildford.

Examples of our areas of expertise include:

- Inheritance tax planning
- Pensions and retirement
- Wealth management
- Financial planning



To book a free, no-obligation initial meeting, please get in touch by phone (01483 456477) or email michael@priceferguson.com

**More information is available
on our website: www.priceferguson.com**

Price Ferguson is authorised and regulated by the Financial Conduct Authority
Registered in England & Wales Company No. 03893166

Burpham Pages

Incorporating Jacobs Well

Local advertising and news magazine, delivered free to over 3,000 homes.

Focussed on the local community and the services available in the general area. Includes Burpham Community Association newsletter.

www.burpham-pages.co.uk

Editorial

Editor **Paul Nicholls**

Contributors **Moir MacQuaide**,
Rev Jo Levasier, **John Boon**

Production

Original design

Generator Creative Consultants

Printed by **Kingsley Print**



Doing our bit for the Environment

Our printers are ISO 14001 environmental accredited, use vegetable based inks to print the magazine and recycle all waste paper and materials.

To mitigate the CO₂ emissions created in the production of our paper 'Carbon Capture' contributions are paid to the Woodland Trust who will plant woodland at one of their accredited woodland creation sites in the UK.

To find out more please visit
www.woodlandcarbon.co.uk and
www.woodlandtrust.org.uk

Contact Us

**For advertising and
general enquiries:**

07597 904755

editor@burpham-pages.co.uk

**Burpham Pages, PO Box 1520,
Guildford GU1 9WQ**

@burphampages

facebook.com/burphampages

Advertising copy deadline

for March – April 2022 issue is
7th February 2022

Whilst care has been taken to ensure that the information contained in Burpham Pages is accurate, the publishers take no responsibility for the accuracy of statements made by advertisers, and accept no responsibility for any omissions or errors which may occur. Advert prices and dimensions are shown on our website www.burpham-pages.co.uk

Burpham Pages is a trading name of **Brand Era Limited**.
Registered in England & Wales No. 08915808.
Registered office: 7 Way Court, Mary Road,
Guildford, Surrey GU1 4QU

Cover image: by Alex Padurariu at Unsplash

Welcome

Dear Neighbours, it's hardest to write the introduction for the January & February issue as I'm always writing it before Christmas, so we have time to print the magazine for delivery in the New Year.

Before Christmas we're still wondering if everyone will like their presents and have we got enough (or too much) to eat on Christmas Day!

Whilst, once again, we're still in a period of uncertainty there does seem to be more of an appetite for getting out and about and doing more (whilst still being as careful as we can, and considerate of others). This has been reflected in the many Christmas events that have been organised during the lead up, most of which have been able to proceed. Unfortunately the Fountain Centre had to cancel their Christmas Concert but there was some consolation as they have been appointed the Tunsgate Quarter's charity for 2022.

If you're feeling generous in the New Year the Burpham Community Association are still fundraising for defibrillators to be situated in Sutherland Memorial Park and at Aldi. To date they have raised over £2,000 but there's still a way to go to achieve the target of £6,000.

In this issue Moira MacQuaide tells us about the origins of the names of the various roads, drives, lanes, ways and avenues

in Burpham. I have to admit I hadn't really given this much thought, even though all the names are so familiar. I found it intriguing and in some way reassuring that even as Burpham gets larger and busier we haven't lost the links to its history and the people who have lived here in the past.

So (whilst I sit here with the Christmas tree lights twinkling in the background) I'd like to place myself in the future slightly and say welcome to 2022. I hope it is a year when we can put Covid behind us and start to concentrate on brighter and more positive things in our lives.

Happy New Year!

Paul Nicholls (Editor)

editor@burpham-pages.co.uk

Contents

5 News & events

11 What's on this month

12 Burpham Pages crossword

15 How peaceful are you feeling?

16 Community Update – BCA

20 The streets of Burpham

24 Smile for the camera please

29 Burpham Gardening Club News

30 Useful numbers



LARGE FORMAT | DIGITAL | LITHOGRAPHIC

FOR ALL YOUR PRINT REQUIREMENTS

Please call 01784 430533 or visit
www.kingsleyprint.co.uk



TREE SURGERY & LANDSCAPING

**LOGS & WOODCHIP
SUPPLIERS**

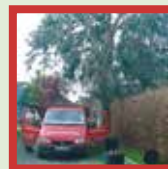
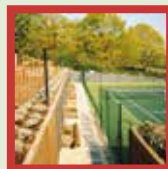
QUALIFIED AND INSURED

24HR EMERGENCY SERVICE

FREE QUOTATIONS

Based in Merrow and established in 1992, Roots & Shoots is a family-run tree care company which offers a professional and comprehensive arboricultural and landscaping service. We take great pride in our reputation and we offer all our clients a professional, courteous, and personal service. All our tree work is done to British Standards 3998 and is carried out to the highest standards by qualified staff.

We aim to ensure the conservation of trees through proper pruning practices. By embracing the latest research and modern techniques we provide the very best care for your trees, and with this in mind, we are happy to provide free advice and estimates.



Checkatrade.com
Where reputation matters

Call 01483 503361 **or** 07768 456828

Email enquiries@rootsandshoots-treesurgery.co.uk

www.rootsandshootssurrey.co.uk

News + events

January &
February 2022

Local news & events: get involved and tell us more about your news and events organised in Burpham, Jacobs Well and the surrounding areas.

New name, new look, same family!



Clandon Park Garden Centre and Woking Garden Centre move to one name, Edwins Garden Centre, after adored grandfather.

As the owner of two family run garden centres in Surrey, Lee Wong and his family have undertaken an exciting new rebrand inspired by his grandfather's love of everything outdoors and his fascination with plants.

The family has owned and managed **Clandon Park Garden Centre** for more than 18 years. In July 2019 they acquired, from Wyevalle, their Woking site which was known as **Woking Garden Centre**. Following the rebrand the two centres will now be named **Edwins Garden Centre**.

"We were delighted to acquire the Egleby Road, Woking site. With two garden centres we decided to give one name across both," said Lee.

"We are very much a family business with my wife and both sets of parents fully involved in the day to day running and management of the garden centre. We wanted a family name. It was not hard to settle on '**Edwins**', after my wonderful grandfather, my mother's father. He had a love of nature and a fascination with plants. He shared with me his amazement at the intricacies

and complexity of plants, their beauty and extraordinary artistic detail. He was my inspiration into my life around plants and a wonderful man"

About Edwins Garden Centre

Edwins Garden Centre is to be synonymous with quality plants. Plants encompass seeds and bulbs, outdoor plants, shrubs, trees, vegetables, fruits, herbs, houseplants and all that is required to be successful planting and growing in the garden and indoors.

Our aim is to offer the Surrey communities, and visitors to the area, an enjoyable and inspiring experience shopping for garden plants and all things gardening, with outdoor living and home accessories that extend life into the garden, whatever the weather!

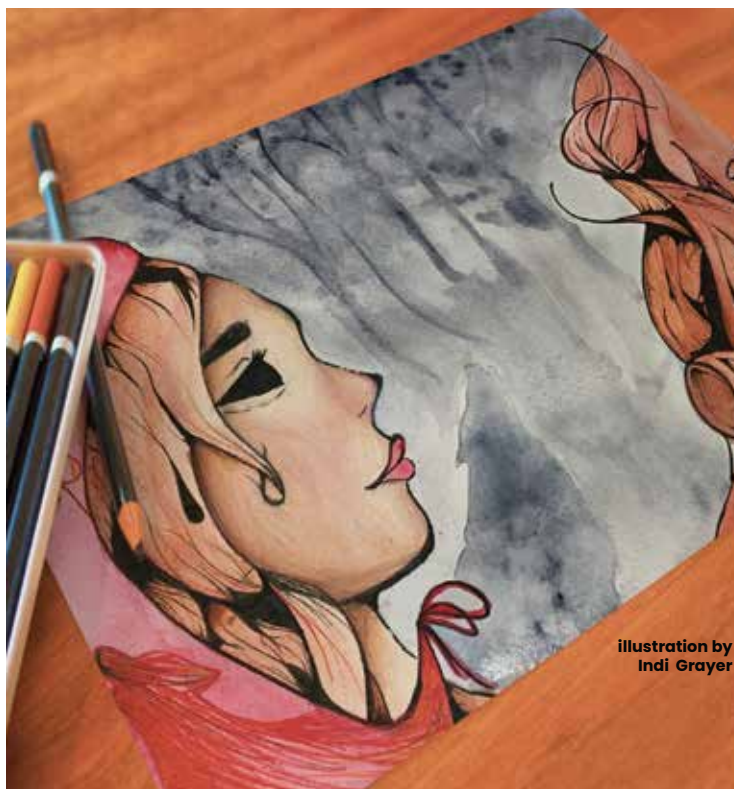
Our new tag line, **Plant. Grow. Be Amazed**, is an encouragement for all to enjoy the health and well-being benefits of getting your hands dirty in the world of plants."

For further information:

www.edwinsgardencentre.co.uk



Whilst care has been taken to ensure that the information contained in Burpham Pages is accurate, the publishers take no responsibility for the accuracy of statements made by, nor the opinions of, contributors, and accept no responsibility for any omissions or errors which may occur.



TA SCHOOL OF ART & DESIGN

Burham, Surrey

WE OFFER CLASSES & PRIVATE TUITION TO STUDENTS AGED 11-18:

- Drawing Skills
- Introduction to Interior Design & Architecture
- Introduction to Graphic Design
- Portfolio Preparation: 11 & 13 + Art Scholarships
- Portfolio Review & Preparation for University/Art College Applications

✉ info@ta-art.co.uk

🌐 ta-art.co.uk

📷 [@ta.artanddesign](https://www.instagram.com/ta.artanddesign)

illustration by
Indi Grayer



for children aged 2-5 years
9:15am-1pm Mon, Tues, Wed
and Fri (longer post COVID)

enclosed playground and
access to a large playing field
qualified, enthusiastic staff
with many years' experience

a safe and nurturing environment
where children can learn and grow
special expertise with additional
needs & accessing the right support
good connections with church and
opportunities for life celebrations
free early years & FEET-funded hours



**Burham
Preschool**

in partnership with



for more information and space availability contact the church office
on 01483 825533 or office@burhamchurch.org.uk

CHURCH OF THE HOLY SPIRIT, NEW INN LANE, GUILDFORD, GU4 7HW

www.burhampreschool.org

registered charity N° 1190881

Fountain Centre chosen as Charity of the Year 2022 by Tunsgate Quarter



The Fountain Centre team are delighted to announce that they have been appointed the official Charity of the Year by Guildford's Tunsgate Quarter.

The partnership will see the **Fountain Centre** as the beneficiary of charity fundraising throughout the year and enable the Fountain Centre to participate in events and activities in **Tunsgate Quarter** which importantly will raise the profile of the charity and spread the word of the many support services provided for cancer patients and their families.

Fountain Centre Chairman Martin Read said: "This is a really big deal for the Fountain Centre and will go a long way to repair the funding shortfall of the last 2 years. We are so incredibly grateful to the team at Tunsgate Quarter for choosing us as their charity, and I know our fundraising team are really looking forward to working with them. It is especially valuable to us to be able to work with Tunsgate Quarter in the heart of Guildford as a way of

spreading the word about the work the Fountain Centre does with cancer patients and their families. We are inspired by their plans for 2022 and look forward to community partnership working at its best."

Claire Suggitt, General Manager of Tunsgate Quarter said: "We are thrilled to be supporting such an important and worthwhile local charity and are looking forward to building a special partnership with the Fountain Centre. We are privileged to operate our beautiful and aspirational shopping and dining destination in the heart of Guildford, and are delighted that all future events at the centre will be helping support such an important cause."

Tunsgate Quarter's support of the Fountain Centre started with all the

centre's Christmas festivities and will continue throughout 2022.

Details of the work carried out by the Fountain Centre can be found at www.fountaincentre.org and you can find out more about Tunsgate Quarter here: www.tunsgatequarter.com



The Fountain Centre is an independent charity established in 1998 and based at St. Luke's Cancer Centre at the Royal Surrey County Hospital. The charity supports over 2500 cancer patients and their families as they go on their cancer journey with counselling, complimentary therapies, wellbeing, family service and more.



TUNSGATE QUARTER
GUILDFORD

Tunsgate Quarter is situated between the historic cobbled High Street and medieval castle, Tunsgate Quarter is Guildford's most stylish place to shop and eat. Set out over three levels, the retail line-up includes Loaf, OKA, The White Company, Design Vintage, Nespresso, Bobbi Brown, Clark's, Seasalt Cornwall and David Clulow. Restaurants include the world-famous The Ivy, Vietnamese street food restaurant Pho, award-winning GAIL's Bakery and Cosy Club and also premium gym GU1 Fitness Studios.

Tunsgate Quarter provides you with a safe shopping experience. They employ a number of overt security measures, but also operate a number of unseen, covert security measures for your protection.

Do you have any events happening in and around Burpham & Jacobs Well that you would like added in the next issue?

Our next issue of Burpham Pages will cover March & April 2022. If you would like your event, happening during this period, added to our 'News & events' or 'What's on this month' sections please e-mail the details to editor@burpham-pages.co.uk before **7th February**.

News + events

Girl Chorister at Guildford Cathedral wins BBC Young Chorister of the Year 2021



Guildford Cathedral is delighted to announce that a member of the Girl Choristers, Ruby has won the prestigious joint BBC Radio 2 and Songs of Praise Young Chorister of the Year 2021.

The final, held in Salisbury Cathedral, was broadcast on BBC 1 at 12.30 pm on Sunday 5 December and on BBC Radio 2 at 7.00pm.

The programme was hosted by Songs of Praise presenter, Aled Jones, and the panel of expert judges – Lesley Garrett, Howard Goodall, and David Grant – selected the winner and the runner-up.

Ruby said, on winning the final: "I still can't believe I won. I feel very lucky

and have loved every minute. I'm so excited for the future. Huge thank you to all those who have supported me, especially Katherine."

Katherine Dienes-Williams, Organist and Master of the Choristers of Guildford Cathedral said 'We are all hugely proud of Ruby and are delighted to celebrate her fabulous achievement.

Congratulations to her and to all the competitors and thank you to all who

have supported her on this journey. We look forward to continuing to enjoy her singing here at the Cathedral on a regular basis.

"I still can't believe I won. I feel very lucky and have loved every minute. I'm so excited for the future. Huge thank you to all those who have supported me, especially Katherine."

In summing up the competition, the judges gave Ruby glowing comments. David Grant said: "It was translucently brilliant". Lesley Garrett said: "She's got this fantastically free, powerful, gorgeous lyrical sound.", while Howard Goodall, on making the announcement that Ruby was the winner said: "In a very, very tight field we felt that this singer gave a performance that was truly outstanding and flawless. "

When thinking of which Christmas Carol to sing for the final of the BBC Young Chorister of the Year, Ruby was very keen to sing 'The Shepherds Sing' by renowned composer and former Kings singer, Bob Chilcott. However, the piece only existed in a four-part choir version. The Cathedral reached out to Bob who very kindly made an arrangement of his own piece for solo voice specifically for Ruby to sing! Huge thanks must go to him for this generous gift.

Part time telesales

We're looking for someone who can take on part time telesales, working from home, on a freelance & commission basis.

Would suit someone who has previous sales and/or marketing experience and a good conversational telephone manner plus an interest in local events and the local area.

Could be suitable for someone who needs to fit around daily childcare commitments.

Brand Era Limited. Registered in England & Wales No. 08915898. Registered office: 7 Wey Court, Mary Road, Guildford, Surrey GU1 4QU

info@brand-era.co.uk

Brand Era

Do you have any events happening in and around Burpham & Jacobs Well that you would like added in the next issue?

Our next issue of Burpham Pages will cover March & April 2022. If you would like your event, happening during this period, added to our 'News & events' or 'What's on this month' sections please e-mail the details to editor@burpham-pages.co.uk before **7th February**.

The Strange Case of Dr Jekyll and Mr Hyde at the Yvonne Arnaud Theatre



From the 1st – 5th of February the Blackeyed Theatre, in association with South Hill Park, bring their thrilling adaptation of Robert Louis Stevenson's dark psychological fantasy, *The Strange Case of Dr Jekyll and Mr Hyde* to the Yvonne Arnaud Theatre.

Doctor Henry Jekyll is a good man. Successful within his field and respected by his peers, he's close to a neurological discovery that will change the face of medical science forever. However, his methods are less than ethical, and when a close friend and colleague threatens to expose and destroy his work, Jekyll is forced to experiment on himself, whereupon something goes very wrong... or very right. And suddenly Jekyll has a new friend, the brutal Edward Hyde.

One of the great classics of British literature brought to life on the stage, this adaptation of the iconic Gothic novella revives the compelling characters and riveting moral dilemmas of Robert Louis Stevenson's *The Strange Case of Dr Jekyll and Mr Hyde*.

Immerse yourself in the myth and mystery of 19th century London's fog-bound streets where love, betrayal and murder lurk at every chilling twist and turn. Gripping, stylish and thought-provoking, this is unmissable theatre. Go on... treat your dark side!

For more information and to book tickets, visit: www.yvonne-arnaud.co.uk. Alternatively, contact the Box Office on 01483 440 000 (Mon-Fri, 10am to 5pm).



Burpham Community Association: Committee Changes

Liz Critchfield has retired as BCA Secretary after ten years of high quality work on behalf of the people of Burpham. Although she will be a very hard act to follow, the BCA desperately needs volunteers to enable this work to continue.

For the time being, the secretary's responsibilities will be shared by the remaining members as so far no one has come forward to take the job on. Please be assured that someone will respond to any emails, telephone calls or letters. The email address remains the same (secretary@burphamca.org.uk) but the contact telephone number has changed to 07513 366072 and the address if you wish to write, is **Burpham Community Association, 6 Darfield Road, Burpham, GU7 7YY.**

Burpham Pages

Local advertising and news magazine, delivered free to over 3,000 homes. Includes Burpham Community Association newsletter. burpham-pages.co.uk

Do you have any events happening in and around Burpham & Jacobs Well that you would like added in the next issue?

Our next issue of Burpham Pages will cover March & April 2022. If you would like your event, happening during this period, added to our 'News & events' or 'What's on this month' sections please e-mail the details to editor@burpham-pages.co.uk before 7th February.

**Are you enthusiastic about education
and supporting your community?
Do you have some time to commit?**

If so, you may be just the person we need!



Burpham Foundation Primary School is looking for enthusiastic and committed individuals to join our **Governing Body**. It's a fascinating and rewarding voluntary role which offers a great opportunity to contribute to your local community, and to help give our children the best possible start in life. There is a time commitment of approximately six meetings per year, plus occasional visits to the school in between meetings.

Governors come from all walks of life and we encourage diversity within the team. As part of our team, you need to both support and challenge the school. Governors need to ask questions to the school to help it investigate how it is performing. You don't need to have worked in education or have any specific qualifications. You just need to be able to work effectively as part of a team, think strategically and be keen to make a positive difference.

Register your interest or find out more by contacting Lee Elliott,
Chair of Governors, at lelliott@burpham.surrey.sch.uk

The Burpham Way – spread your wings and fly high!

Generator.

empowered by open-thinking

If you want to promote your business to a larger audience you'll need to have a memorable identity and an engaging message that inspires people to get in touch with you.

We can help you with the design,
artwork and production of your:

- Website
- Logo
- Brochures
- Advertising
- Marketing & PR
- Social media

**Call us on 01483 205010 to discuss
your specific requirements.**

Design, branding and marketing
services for all sizes of company
from start-ups to corporations

Generator Creative Consultants Ltd
T +44 (0) 1483 205010
E empowered@generator-creative.com
www.generator-creative.com

Listen. Think. Create. Inspire

What's on this month

January &
February 2022

Regular Services at Burpham Church

All services are at the Church of the Holy Spirit in New Inn Lane – check website for one offs at St Luke's Church.

Sunday January 23rd

Messy Church



4.00pm. Making church fun for all the family – crafts, activities, food and celebration.

Thurs 17th – Sun 20th February

Halterm Holiday Club – A Dragon's Tale



10.00am-1.30pm. For primary aged children. 4 days of fabulous fun with drama, games, jokes, songs, crafts and much more. Bookings open on January 10th, via burphamchurch.org.uk. For more information check out the website.

Sunday 9.15am

Holy Communion



We use the Church of England Common Worship service with hymns. This service runs every week

Sunday 10.45am

Contemporary Worship



With groups for children under 11: this informal service with a band, runs MOST weeks, but not when we have messy church in the afternoon. Check out our website for full information. www.burphamchurch.org.uk

Thursday 11.00am

Holy Communion



A quieter more reflective service.

Burpham Residents' Winter Lectures 2022

All lectures are free, take place at the **Burpham Village Hall** and start at **8.00pm** and last just over an hour.

Friday 7th January 2022

Creatures of the Rain: Gargoyles, Grotesques and Hunkypunks



Andrew Plumridge will reveal some of the bizarre creatures that enrich the upper reaches of our churches and public buildings.

Friday 14th January 2022

Freewheeling to Vienna



Paul Gillingham will share his adventure of cycling to Austria's capital.

Friday 21st January 2022

Yes, Minister – an insider's view



Former minister Bob Hughes will take us behind the scenes of government to consider the realities of life at the top.

Friday 28th January 2022

Medieval sex and marriage



Historically, marriage has been an awkward matter. Why were panels of women assembled to assess the virility of a husband? How celibate were the priests who married them? Brian Creese will answer these questions and more.

Friday 4th February 2022

You have the right to remain silent...



Andrew Plumridge will lead us through a selection of bizarre and obscure laws that you probably break on a daily basis.

theWI
INSPIRING WOMEN



Our AGM was held at Burpham Village Hall on 16th November and we enjoyed celebrating the Festive Season with our Christmas lunch on 14th December.

Our regular evening meetings will resume on 18th January, 7.30pm at Burpham Village Hall and continue on the 3rd Tuesday monthly except in August. The list of our 2022 speakers will be available on our website as soon as they are confirmed.

Confirmed talks:

Tuesday 18th January

A-Z of the English Dictionary

Author Susan Purcell writes and speaks on the English language and linguistics.

Tuesday 15th February

Women Writers and their gardens

Cherrill Sands focuses on women writers Jane Austen, Agatha Christie and others, and how they were often inspired by their own gardens.

The WI plays a unique role in providing women with opportunities to build new skills, to make good friends, to take part in a wide variety of activities and to campaign on issues that matter to them and their communities.

If you would like further information about our WI, including how you can join our meetings please email us at burphamevewi@hotmail.com

For further information:

www.burphamevewi.co.uk

[facebook.com/burpham.eveningwi](https://www.facebook.com/burpham.eveningwi)

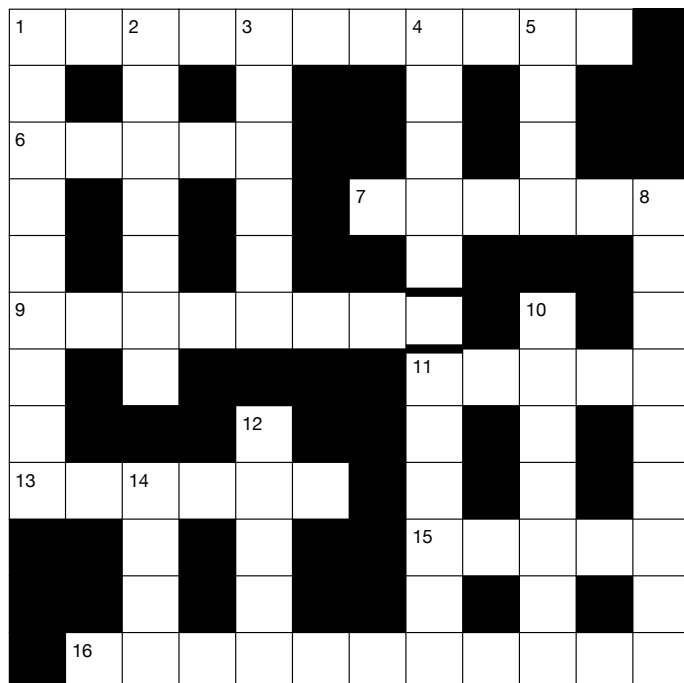
Do you have any events happening in and around Burpham & Jacobs Well that you would like added in the next issue?

Our next issue of Burpham Pages will cover March & April 2022. If you would like your event, happening during this period, added to our 'News & events' or 'What's on this month' sections please e-mail the details to editor@burpham-pages.co.uk before **7th February**.

Burpham Pages Crossword

Crossword No. 21
January & February 2021

© Burpham Pages



Across

- 1 Person whose job is to sell things in a store, or by visiting or phoning customers (11)
- 6 A place of residence; a house or home (5)
- 7 Move or travel behind (6)
- 9 Playful misbehaviour, especially on the part of children (8)
- 11 Extremely unkind and unpleasant and causing pain to people or animals intentionally (5)
- 13 Action or strategy carefully planned to achieve a specific end (6)
- 15 Small digital image or icon used to express an idea or emotion (5)
- 16 Social class oriented to economic materialism and hedonism (French in origination) (11)

Down

- 1 Definite or clear expression of something in speech or writing (9)
- 2 Female lion (7)
- 3 Formal talk given usually to a large number of people on a special occasion (6)
- 4 Machine resembling a human being and able to replicate certain human movements and functions automatically (5)
- 5 An elliptical shape (4)
- 8 Existing or happening in all parts of the world (9)
- 10 Eager to know or learn something (7)
- 11 Murder mystery board game (6)
- 12 Fermented apple juice (5)
- 14 Device fitted across all strings of a guitar to raise the pitch of each string simultaneously (4)

Solution to Crossword No. 20

Burpham Pages issue No. 95
November & December 2021

The solution to each crossword will be published in the following issue of Burpham Pages as well as on our website www.burpham-pages.co.uk
For the January – February 2022 solution please see our March – April 2022 issue.



Bullimores



Accountants for Life

**Tax • Accounts • Probate
Inheritance Tax &
Executorship**

T: 01306 880880

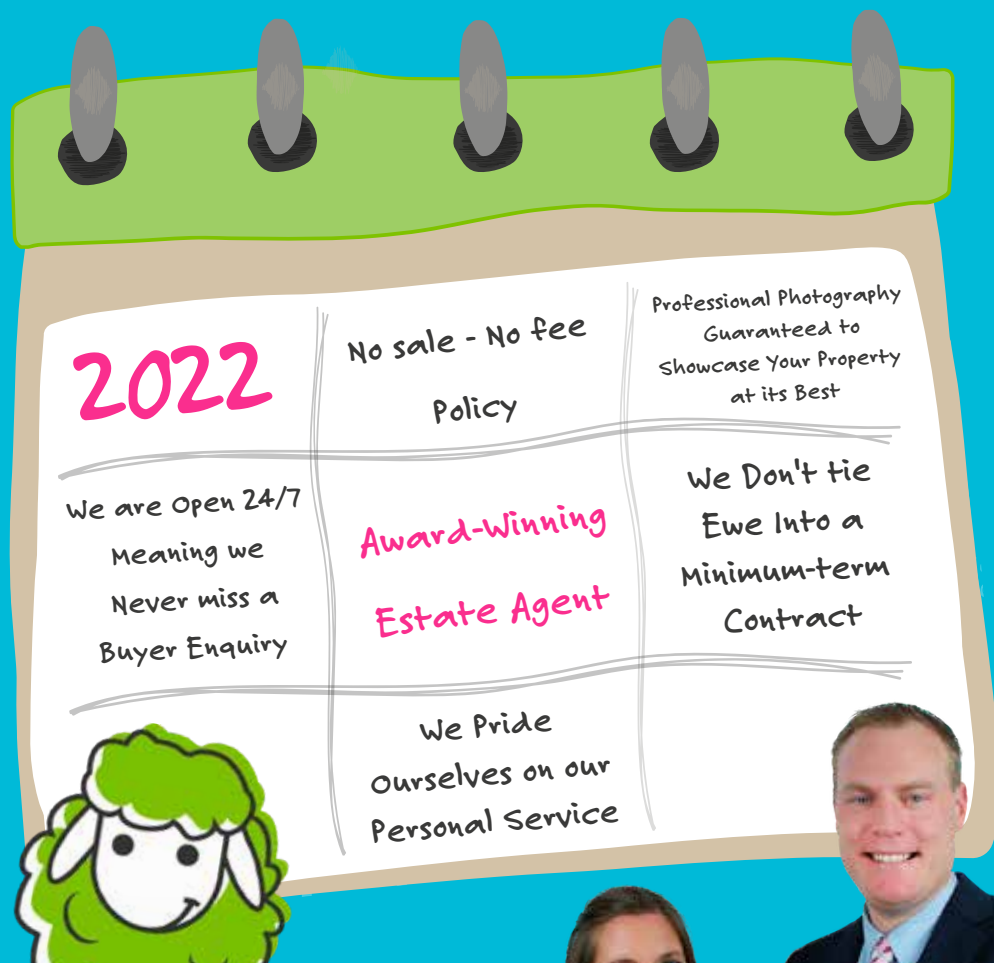
E: partners@bullimores.co.uk

W: www.bullimores.co.uk

Bullimores LLP licensed to carry out the reserved legal activity of non-contentious probate in England & Wales by the ICAEW

Thinking of Finding a N'ewe Home This Year?

Join the Happy Customers We Helped in 2021



Start Your 2022 Home Moving Plan By Getting
A FREE Home Valuation Report Online At:
EweMove.com/Guildford
Or Call: (24/7) 01483 361 029

EweMove Guildford Branch Owners Lucy & Ryan Moulton respects any existing sole agency agreement already in place with another agent.



accountancyfirst

- Companies • Self-Employed
- Tax Returns • New Businesses

Are you thinking of starting a new business or becoming self-employed?
I can provide all the accounting and tax services you will need.

It's time to submit your self-assessment tax return for 2020/21. The deadline is January 2022. Don't panic – I can help!

John Beard MAAT

I am an experienced accountant based in Guildford.
I offer a personal tax and accounts service to individuals and businesses.

Call **07801 144470**

Johnbeard@accountancy-first.co.uk
www.accountancy-first.co.uk

John Beard is licensed and regulated by AAT under licence number 100445

aat AAT Licensed Accountant



Thomas Shales
Domestic Electrician
Servicing Guildford and the surrounding area

For all domestic needs, including (but not limited to):

Fuseboard upgrades | House rewires
Fault finding | Internal & external lighting

Contact us now for a free, no obligation estimate

tshales@hotmail.co.uk
www.shaleselectrical.co.uk

Contact Tom on:

07873 639159



"Tom has been great! He has been installing new lights in our home and he's done a fantastic job so far. He's efficient, focused and hard working. Would highly recommend." Kat & Oli, Guildford

FULLY INSURED

— EST. 1980 —

SURREY CLEANING SERVICES



**Specialist in Hard Floor Cleaning,
Carpet & Upholstery Cleaning
& Wood Floor Restoration Services**

*A family run business providing cleaning services
in Surrey and surrounding areas*

01483 566802
www.surreycleaningservices.co.uk

How peaceful are you feeling?

As I write this, yet again, COVID rates are shooting up and restrictions are being reimposed to try and control the latest variant's spread.

Perhaps not the Happy New Year we were hoping for (again!) and I wonder how these more recent developments have left you feeling as we move into 2022? Concerned? Fed-up? Anxious? Frustrated? These are the kinds of feelings we might naturally be wrestling with our world continues to wrestle with how to best respond to this ongoing health pandemic.

In our Christmas celebrations at Burpham Church we remembered that the baby in the manger whose birthday we were celebrating was the Prince of Peace, promised centuries earlier. This might have sounded like a nice idea back in December with all the fun of Christmas celebrations still to look forward to, but as we leave behind the lights and presents, what happens to

that promised peace? Is the peace that the angels promised to the world, just a nice holiday encounter or can we really experience it in the cold and greyness of January and February?

The testimony of millions across the ages is that this promised peace, is not a pipe dream nor a holiday experience but a present reality. Jesus said to his friends, **"Peace I leave with you; my peace I give you. I do not give to you as the world gives. Do not let your hearts be troubled and do not be afraid."** (John 14v27)

What an amazing promise! And as we continue to struggle with knowing how best to tackle these COVID-times, can I encourage you to test it out for yourself. One of the best ways to discover Jesus' peace in our own lives is not to try and eliminate all the stress from it (nice idea, but clearly unrealistic for most of us!) but talk to him about the stress and let him take you through it. Christians call this prayer. Maybe a different way to tackle the present anxiety? Why not try it and see if Jesus' promise still stands in 2022.

With every blessing for the coming year
Rev'd James & Jo Levasier

james@burphamchurch.org.uk
jo@burphamchurch.org.uk



BURPHAMCHURCH
SHARING THE GOOD NEWS OF JESUS

Church Office: **01483 825533**
www.burphamchurch.org.uk



Welcome to the **Burpham Community Association**

Community Update

January & February 2022 We wish you all a very Happy New Year

Sutherland Memorial Hall

There cannot be many people in Burpham who have not visited Sutherland Memorial Hall. It has been the venue for many family celebrations, sporting activities, a meeting place for local groups like the Brownies – and also for the BCA public meetings.

The hall, like all other public places, was closed during Covid lockdowns and the last BCA meeting was in January 2020. Back then, the hall was run by the Sutherland Memorial Park Amenities Club (SMPAC) – all volunteers from the various groups using the hall. When GBC decided to

increase rents and responsibilities for the hall, every effort to keep going was made by the relevant bodies but in the end it proved too large a commitment. The running of the hall then became the responsibility of GBC.

Despite the ongoing worries over the Omicron variant of Covid, we are hoping to start our bi-monthly meetings in 2022. We knew the nursery school had re-opened so assumed the hall was open for business. GBC were asked for details of hiring procedure and charges. The response was stark.

The nursery has a long term lease for use and holds the keys; GBC “have no resources to arrange ad hoc use ourselves.”

Apart from the over-subscribed Village Hall, there are few alternatives where local meetings can be based. Sutherland Memorial Hall is a valued community asset and must not be squandered. The BCA will pursue this issue vigorously.

Committee Changes



Liz Critchfield has retired as secretary, the committee would like to express their gratitude for her effort, professionalism and high quality work in over ten years in the role.

For the time being, the secretary's responsibilities will be shared by the remaining members as so far no one has come forward to take the job on. Please be assured that someone will respond to any emails, telephone calls or letters. The email address remains the same but the contact telephone number has changed (see above) and the address if you wish to write, is Burpham Community Association, 6 Darfield Road, Burpham, GU7 7YY.



BCA on Facebook & Twitter!

Join the conversation! Open to members and non-members, it's a great way to stay up-to-date with everything that's happening in our community.

 twitter.com/burpham_c_a
 facebook.com/burphamCA/



Guildford Community Lottery

A way for everyone to support local causes and be in with a chance to win prizes of up to £25,000. **50% of all tickets sold from our page go to the BCA!**

Tickets only cost £1 per week, buy now at www.guildfordlottery.org/support/burpham-community-association

To get in touch with the BCA: Contact the secretary on secretary@burphamca.org.uk call **07513 366072** or visit the website at www.burphamca.org.uk

We represent the community of Burpham, Guildford



Defibrillators

We would like to thank everyone who has contributed to our fundraising for two defibrillators, one to be situated in Sutherland Memorial Park, the other at Aldi.

We need to raise around £6,000 to cover the initial cost, maintenance and training. The project has the support of Councillor George Potter and we are hopeful that some SCC money might be forthcoming.

So far we have raised over £2,000 – if you would like to donate, please

use our Just Giving page <https://www.justgiving.com/fundraising/burpham-community-association>

We could really use some help with fundraising so if you would like to be involved with this project please email cpad@burphamca.org.uk



Flood Forum

The next Forum, chaired by Angela Richardson MP, is provisionally booked for the morning of January 21st.

If you have any issues you wish to raise please contact the BCA.

Burpham's Newest Resident

This magnificent creature appeared in Jim Allen's garden at the end of November last year and has caused a bit of a problem.

Despite much hunting through bird books none of us can be sure of a correct identification – buzzard? peregrine? Perhaps any bird spotters out there could give us some help!



Help by
joining the
**Burpham
Community
Association**
today!

NB We never share your data or use it for any purpose other than informing you of BCA activities.

Subscriptions are £8 per household or £4 per single occupancy and run from January to December. Join now or renew your membership for 2022.

You can pay by:

Direct Debit – visit our website at www.burphamca.org.uk which has a link to this system – an email to treasurer@burphamca.org.uk giving your details would be helpful.

Online –

Account name: Burpham Community Association.

Sort Code: 40-22-26.

Account Number: 41049194

To help the Treasurer please identify yourself using initials, surname and the first line of your address.

Please contact Liz Turner, our Membership Secretary, if you have any queries. Her email address is membership@burphamca.org.uk



WEYLEA AVENUE, BURPHAM



BRIAR WAY, BURPHAM



LONDON ROAD, BURPHAM

Think
selling o
in Burp

We have
of both se
letting th
properties

INVITA

We would like
to accept o

free m
appr

of your prop
selling o

Please con
01483 34
further inf

king of
r letting
opham?

a history
elling and
ne finest
in the area.

ATION

e to invite you
ur offer of a

arket
raisal

erty for either
r letting.

ntact us on
47100 for
ormation.



ELDER CLOSE, BURPHAM



WOODRUFF AVENUE, BURPHAM



NEW INN LANE, BURPHAM

Chantries & Pewleys

chantriesandpewleys.com

Shalford Sales 01483 304344
shalford@chantriesandpewleys.com

Lettings 01483 405222
lettings@chantriesandpewleys.com

The streets of Burpham...

But it turned out that there are no streets!
Roads, drives, lanes, ways, avenues, drives, etc, but no streets.
100 years ago there was only the London Road in Burpham,
plus Burpham Lane, New Inn Lane, and Merrow Lane.



Map of Burpham (circa 1915)

London Road was the main, and very busy, route from London to Portsmouth, but until the early 20th century Burpham was made up of farmland and not much else. Housing developments from the 1920s onwards have brought some large estates, including Winterhill, New Inn, Weylea and Bowers Farms.

The roads on the New Inn Farm estate, begun in the 1950s, are often referred to as the Herb Estate, with many old herb names such as Coltsfoot, Burnet, Bryony, Fennell and Woodruff. Whereas many roads on the Weylea Farm estate, built in the 1980s, are named after past residents of the village, such as Sutherland Drive (the Duke owned Bower's Mill), Elkins Gardens (after the brewing family), Turner Close (William and Emma ran the village shop), Gatley Drive (George and Percy were

farmers), Pimm's Close (William was a farmer). Some refer to trees, such as Elder Close and The Cedars.



Paddocks Estate 1930s

The Paddocks estate, Paddocks and Meadow Roads off Burpham Lane, was built in the 1920s, on the site of the Marlyn's paddock and meadow. Further along is Howard Ridge, named after Roy and Percy, local builders. Clay Lane was built to replace the old Jacob's Well Road, when the A3 was built, and refers to the heavy clay soil in the area. Bower's Lane is part of the old road, now blocked for the A3 and after the hump-backed bridge, but giving access to Bower's Mill.



Burpham crossroads (circa 1930)

There were no houses on New Inn Lane until the late 1920s when Glendale Drive was developed as part of the Winterhill Farm estate and the old brick works. Several roads in the area reflect the local flora, such as Hawthorne and Briar Ways, Great Oaks Park, Oak Hill, Oak Tree Close and Orchard Road.

Weybrook Park is the newest of the large estates, many of the road names reflect the type of farming on Bower's Farm such as Dairyman's Walk and Jersey and Guernsey Closes. Some relate to local farms including Ladygrove, Whitley Manor, Tithebarn and Hazelhurst. Newark refers to the Priory at Ripley; Ockley and Abinger are local villages; Cotts Wood is near West Clandon. Watersmeet means where two rivers meet, so probably where the Merrow stream flows into the River Wey.

One of the most recent developments is Wroth Place, named after Robert Wroth, who was MP for Guildford in the early 1700s and Lord of the Manor for Burpham. He sold the village to Lord Onslow, but there doesn't seem to be anything named after that family.

There are lots of road names in Burpham that I can't identify their source, if you know what your road is named after, then please let me know moira.macquaide@gmail.com

If you are willing to share your memories and/or photos to tell us more about Burpham then please contact Moira MacQuaide, either by e-mail (moira.macquaide@gmail.com) or by phone or text (07963 756543). My two books ('The History of Burpham Primary School' and 'Burpham – A Gateway to Guildford') are still available from me for £10 (free delivery locally) or on Amazon.



The small, local, friendly, **GREAT VALUE** garage.

**Specialists in Audi, Volkswagen, Seat
and Skoda Vehicles.**

**IMI Certified for Electric and Hybrid
propelled Vehicles.**



Servicing & Repairs according to manufacture guidelines

- Engine management diagnosis.
- Full Vehicle health checks.
- Replacement Genuine Keys.
- Work carried out using only Genuine Parts.
- Air conditioning service and diagnosis.
- Advanced Driver Assist System (ADAS) Calibration.
- Component Protection Removal.
- Software updates and much more!

Free Loan Car

Available while we work on your car.



What ever your needs you can count on us!

Tel: 01483 285792

Email: info@ct-cars.co.uk

www.ctcars.co.uk

Find us on

Where to find us

Open View Farm, Epsom Road,
West Horsley, Surrey. KT24 6AP



The best care at home

Home Counties Carers

Helping people at home

Care Quality Commission OUTSTANDING

We are a close knit family run Home Care business that is committed to providing friendly & reliable care, by carers who genuinely care.

We are very proud of all our home care heroes and are looking for new carers to join our team.

Would you like some help at home?
Call Matthew today on **01483 224 985**

homecountiescarers.co.uk



Guildford Roofing & Guttering
Roofing Contractors

Flat roofing specialists | Re-roofing
Slating | Tiling | Lead work | Chimneys
Pointing | General roofing repairs
UPVC Fascias, soffits and guttering

We are a friendly local family firm that has been established for over 30 years.

All our work is estimated prior to work commencing.

T 07840 800637 | 01483 839672
E guildfordroofing@gmail.com
www.guildfordroofingandguttering.co.uk

Checkatrade

SURREY TRADING STANDARDS APPROVED

Confederation of Roofing Contractors
The Premier Roofing Trade Association in the UK
All Members Offer 10+20 Year Insurance Backed Guarantees



MSBOOKS

Do you need help with your accounts and tax return?
I offer a professional and friendly service to local businesses.

- + VAT returns and Making Tax Digital
- + Sole Trader accounts
- + Self Assessment tax return
- + Bookkeeping for local businesses
- + Xero cloud accounting

Call Mark on **07735 700 037** or
Email Info@MSBooks.co.uk
Visit www.MSBooks.co.uk

XERO ADVISOR CERTIFIED

THE INSTITUTE OF CERTIFIED BOOKKEEPERS

Atlas IT Solutions

Having computer problems? Let us help!
Below are some of the services we offer:

- * Computer / laptop repairs
- * Computer set up (home or business)
- * Data Recovery
- * Computer upgrades & clean ups
- * Wireless & Wired Networks
- * Virus & spyware removal
- * Consulting services

Contact us now for a free no obligation quote:

07525 708113

07751 231460

01483 828440

atlasits@hotmail.com

**Free local collection
and delivery service available**

ZOEY HACKNEY

**PROFESSIONAL PAINTING
& DECORATING**

Qualified and fully insured

Local recommendations

Free, no obligation quotations

Reliable, skilled, friendly

t 01483 222830

m 07721 455554

e zoeyhackney@btinternet.com



All types of Bricklaying

Extensions, Patios & Driveways, Garages
Block Paving, Garden Walls, Re-pointing



All types of Roofing

Flat Roofs, Tiling, Chimneys,
Soffits & Fascias, Lead Work & Guttering,



All types of Landscaping

Fencing & Landscaping



All types of Jet washing

Roof Cleaning, Guttering Cleaning,
Patio Cleaning

**Long standing family-run business in Burpham.
Local references available.**

Checkatrade.com
Where reputation matters

01483 538531

07836 782422

Email: afbbuilders@hotmail.co.uk

www.afbbuilders.co.uk

A close-up photograph of three young women with dark hair, smiling and posing for a photo. They are in front of a Christmas tree with warm, bokeh lights in the background. The woman on the left is looking towards the camera, the woman in the middle is looking down and smiling, and the woman on the right is looking towards the camera and smiling broadly.

Smile for the camera please

Over Christmas and New Year we've all probably had to pose for a few photographs, especially now that almost everyone has a smart phone with a camera in their back pocket.

Images portrayed in the movies or on social media put unreasonable pressure on us to continually look our best for the camera.

Along with the impact of the indulgences over the festive period, likely to be consisting of some of the foods and drinks that can discolour teeth, some of us may well be less willing to smile for the camera.

But what can we do, or rather what should we do to keep our smiles as healthy as possible?

We spoke to dentist Mitul Patel, Clinical Director & Principal Dental Surgeon at Waterden Dental Practice in Guildford to see what advice he could give us.

Back in National Smile Month (May-June) the organisers carried out a nationwide poll that found most of us regularly feel self-conscious about the appearance of our teeth.

More than half of British adults (51%) say they are often made to feel anxious about how their smile looks and less than a third (29%) are likely to pose for a photograph with an open-mouth smile. Discoloured teeth are the biggest reason we are not smiling for the camera (33%).

This got us thinking...

What makes a beautiful smile? Is it a Hollywood smile of straight, white, perfectly uniform teeth? Or is it a healthy smile with all its quirks and imperfections? Or maybe one that's full of gaps?

The answer, of course, is whatever you feel comfortable with and one that you are proud to show off.

Dentists all agree that a healthy mouth is what's essential, not for aesthetic reasons but for health.

Healthy mouths reflect a healthy body – they have pink gums and are pain-free. Red gums or gums that bleed when you brush your teeth indicate that something is not right and the main culprit is gum disease.

The 3 key messages being promoted during National Smile Month were:

- **Brush last thing at night and at least one other time with fluoride toothpaste.**
- **Cut down on how much and how often you have sugary food and drink.**
- **Visit your dentist regularly, as often as they recommend.**

Ultimately, the aim is to help us achieve good physical and mental wellbeing by improving our oral health.

Smile giggles

However, if you don't feel happy to show off your smile, then ask your dentist for advice. There are lots of ways they can help.

Dentists all agree that a healthy mouth is what's essential, not for aesthetic reasons but for health.

If discoloured teeth are causing you concern, the first and best place to start is with a hygiene visit – not only will your teeth look better, they will be healthier too.

Be selfish with your toothbrush!

Despite it being bad news for our health, one in four of us are happy to share our toothbrush with others.

A new study has found that more than a quarter of the UK population admit they would share their toothbrush with family, friends, a partner, neighbour or celebrity.

Men are significantly more likely, at 32%, than women (20%). Younger adults are nearly twice as willing at 55%, compared to their parents (30%), and around four times more open to do so than their grandparents (13%).

Dr Ben Atkins, dentist and trustee of the Oral Health Foundation, says:

"Although it may seem like a kind gesture to share your toothbrush, it really is not a very good idea. Sharing a toothbrush leaves you susceptible to all sorts of oral and general health problems.

"This is because brushing sometimes causes the gums to bleed, which exposes everyone you share your toothbrush with to bloodstream diseases. This means that by sharing a toothbrush, you could also be sharing blood, which is a lot riskier than just swapping saliva."

There are many hundreds of different bacteria and viruses in our mouths and people sharing a toothbrush could be passing these on to others. This could include common colds, cold sores or even Hepatitis B.

Keeping your teeth clean & healthy

Airflow is an advanced and predictable hygiene procedure for effectively removing stains and plaque from your teeth, implants or restorations.

It uses a mixture of air, water and a very fine powder to thoroughly polish and clean your teeth.



Image by Photomix at Pexels

Spotlight:

Opening bottles, nail biting & tag tearing

Do you use your teeth to open bottles, tear clothing tags or bite your nails?

If so, you are not alone but the advice from dentists is to stop!

Most of us are putting our oral health at risk by using our teeth as tools for jobs they weren't intended for.

Joint research by the Oral Health Foundation and Philips has found that 65% of us frequently use our teeth for tasks other than eating and drinking.

The most common misuse for our teeth is tearing sticky tape with 41% of us admitting to doing this regularly. More than a quarter of us bite our nails while over a fifth use our teeth to carry things when our hands are full.

Other popular uses include taking tags out of clothing (20%), chewing pens and pencils (16%), opening bottles (9%) and doing up zips (4%).

Dr Nigel Carter OBE, Chief Executive of the Oral Health Foundation, says that while it may seem trivial, using our teeth as tools poses a considerable risk to our oral health:

"Anything from opening bottles to chewing foreign objects can damage existing dental work or cause our teeth to crack."

The most common misuse for our teeth is tearing sticky tape with 41% of us admitting to doing this regularly.

"There are also examples of teeth shifting out of place, chipping, and in some cases breaking, due to the pressure and strain. Accidents are also more likely to happen which could result in invasive and expensive emergency dental work."

Young adults are the biggest culprits when it comes to using teeth in improper ways with 85% of 18-35-year-olds admitting to abusing their teeth by performing unusual tasks with them. This is significantly higher than 35-54-year-olds (70%) and the over-55s (54%).

Restoring teeth

However, if you have cracked or chipped a tooth, don't worry help and advice is available and there are a raft of solutions at dentists' fingertips, from dental veneers or crowns, to composite bonding.

Composite bonding can transform the appearance of one or more teeth in a single visit. Tooth-coloured composite resin (like a white filling) straightens uneven or chipped edges, or closes gaps between our teeth. This fast, affordable and impressive treatment requires minimal tooth preparation and is completed in less than one hour per tooth often without the need for any anaesthetic.





waterden
DENTAL PRACTICE

Caring for you and your smile

Welcome to Waterden Dental Practice, located in central Guildford, offering private dental services. We focus on quality and comfort and add extra time to your appointment to treat your case to the highest standard.



Welcoming new patients!

4 Waterden Rd, Guildford GU1 2AW

01483 565 290

info@waterdendental.co.uk

- General dentistry
- Invisible teeth straightening
- Hygiene therapy suite
- Teeth whitening, including 'zoom' studio
- 3D intra-oral scanning
- Facial aesthetics
- Dental implant and oral surgery clinic
- Dental membership plans available
- Onsite customer parking

Dental Membership Plan

From just £15.85 a month
benefit from the following:

- Dental exams
- Hygiene treatments
- Free x-rays
- Free emergency consultations
- 10% reduction in cost of general dental treatments
- £100 reduction in cost of home teeth whitening

www.waterdental.co.uk

01483 565 290



**ALL
WORK FULLY
GUARANTEED**

**FREE
ESTIMATES
& ADVICE**



New & Old Roofs All Roofs Repaired

Tiling & Slating Replacements • Gutter Cleaning & Replacements
Flat Roofs • UPVC Fascia Boards • Soffits • Cladding
Down Pipes • Gutting • Gutter Clearance • Chimney Restoration
Apex Boards • Barge Boards • Re-pointing • Brickwork Repairs
Moss Removal and Roof Cleaning

For any enquiries please contact William Crittenden:

410 Lower Road, Effingham KT24 5JP

Newmarsh Farm, Horsley Road, Cobham Surrey, KT11 3JX

T: 01483 378334 M: 07470 088047 E: info@weathersureroofing.co.uk

To view testimonials visit our website: www.weathersureroofing.co.uk

JENNIFER MARGRAVE SOLICITORS LLP

- Wills, Trusts & Probate
- Lasting Powers of Attorneys
- Court of Protection matters
 - NHS funding issues
 - Non-mortgage related residential conveyancing

Tel: 01483 562722

The Old Post Office, 130 Epsom Road,
Guildford, GU1 2PX



**Wills &
Inheritance
Quality**



E: enquiries@jennifermargrave.co.uk

We advise on law but do much, much more!

www.jennifermargrave.co.uk

Authorised and regulated by the Solicitors Regulation Authority
SRA No. 533213



Chai on the Patio!



*The best Indian street food
in town! Plus Meals to take home*

Silent Pool, Shere Road, Albury GU5 9BW

www.mandiraskitchen.com

Burpham Gardening Club News

January & February

To join the club or our meetings call John Boon on 01483 874123

Congratulations to the following overall winners at the Autumn Show, Peter Cox who won the Chairmans Cup for Fruit and Vegetables, Morriss Kemp who won the Fowler Trophy for Flowers and Elizabeth Cox who won the J & J cup for the Cookery classes.

At our meeting on **January 25th**, Peter Almond will be giving a talk on '**Gardening for Wildlife**' and on **February 22nd** Vincent Gradwell will be taking us on tour of the '**Canary Islands in Spring**'. I wish you all a successful year in your garden and that you will grow plenty of entries for our shows.

Things to do in the garden in January.

- 🌱 If you cannot garden because the soil is rain sodden or frosted you can use your time by studying plant catalogues which have arrived in the post on a regular basis.

...remember that this year's novelty seeds are likely to be next year's ordinary seeds.

- 🌱 The same advice applies as when ordering spring flowering bulbs, the larger the plants you buy the better they will be when planted out in May. If you only need a few plants it would probably be better to visit a local nursery such as **Elm Nursery**

at Sutton Green in May where you can select your plants first hand.

- 🌱 New seed varieties which are usually F1 Hybrids are expensive to buy and often difficult to germinate, so look on the back of the packet to see how many seeds you are buying for your money, remember that this year's novelty seeds are likely to be next year's ordinary seeds.
- 🌱 Whilst the fruit buds are still dormant Apple and Pear trees can be pruned, cut out any congested growth to increase airflow which will improve the quality of next seasons fruit, cut back to a fruit bud which is large and rounded on older growth, one year old shoots should be pruned back to a slender bud.

Things to do in the garden in February.

- 🌱 Plunge shrivelled Dahlia tubers into a bucket of tepid water overnight, having removed any rotten tubers, they can then be started into growth to provide cuttings for new plants, place the tubers in a seed tray or pot and lightly cover with damp soil.

- 🌱 Slow germinating annuals such as Antirrhinum and Lobelia should be sown indoors.
- 🌱 Prune Summer flowering deciduous shrubs such as Buddleia which flower on the current year's growth. Cut back Summer and Autumn flowering Clematis to the lowest pair of strong buds.
- 🌱 Sow Sweet Peas and pot on those sown in the Autumn.
- 🌱 When it is mild Broad Beans, Carrots and Parsnips can be sown under cloches.

When it is mild Broad Beans, Carrots and Parsnips can be sown under cloches.

- 🌱 Sow Greenhouse Tomatoes, Cucumbers and Peppers at 21°C.
- 🌱 Seed Potatoes should be placed on their ends in a light, cool, frost free place to sprout.

Useful numbers

Police

Call **101** for local police team

Village Halls

Sutherland Memorial Hall..... 01483 300404

Jacobs Well Village Hall..... 07482 632144

Burpham Village Hall..... 07752 549313

Local Councils & Councillors

Borough Councillor (Burpham)

George Potter..... 07411 005115

Ted Mayne..... 01483 565296

Borough Councillor

(Worplesdon & Jacobs Well)

Ruth Brothwell..... 01483 223571

Ann McShee..... 01483 825907

Bob McShee..... 01483 825907

Worplesdon Parish Council

(Jacobs Well)..... 01483 300094

County Councillor

(Guildford East – Merrow & Burpham)

George Potter..... 07411 005115

Supermarkets

Sainsbury's (Burpham)..... 01483 506767

Local Associations

Burpham Community Association.....

01483 567791

Jacobs Well Residents Association

(Secretary)..... 01483 577994

(Chair)..... 01483 822976

Veterinary Surgeons

Stocton Veterinary Centre..... 01483 604308

Alder Veterinary Practice..... 01483 536036

Chemists

Boots Pharmacy (Merrow) .. 01483 572421

Lloyds Pharmacy in Sainsbury's

(Burpham)..... 01483 566076

Schools

Burpham Primary School..... 01483 572510

George Abbot School..... 01483 888000

Sports Venues

Sutherland Memorial Park..... 01483 444718

Hospitals

BMI Mount Alvernia Hospital.....
01483 570122

Royal Surrey County Hospital.....
01483 571122

Nuffield Health Guildford Hospital.....
01483 555800

Doctors

Merrow Park Surgery..... 01483 503331

Churches

Burpham Church (St Luke's & The Church of The Holy Spirit)..... 01483 825533

Local Charities

Age UK Surrey..... 01483 503414

Challengers..... 01483 230060

Guildford Lions..... 0345 833 2884

The Fountain Centre..... 01483 406618

Headway Surrey..... 01483 454433

Dentists

Burpham Dental Care..... 01483 561666

Waterden Dental Practice..... 01483 565290

Andrew F Wye Limited CHARTERED ACCOUNTANTS

A Burpham resident, I have over 30 years of experience dealing with completion of accounts and tax returns.

- Personal self-assessment returns
- Limited Company & LLP accounts and tax returns
- Real time filing for MTD VAT returns and payroll / CIS returns

If you would like more information or to arrange a meeting to discuss how we can help you, please call

01483 420039 or 07776 250454

Email andrew@andrewfwye.com

Visit www.andrewfwye.com

Our office is at:
4 Beaufort Parklands,
Railton Road, GU2 9JX.



Naomi Kefford Counsellor

Dip. Couns., B.A.(Hons), MSc (Psychology), MBACP

Are you experiencing difficulties in coping with life because of:
depression, anxiety, stress, panic attacks, bereavement, other loss in personal or work life, low self-esteem, relationship difficulties?

Counselling can help:

I am now offering 'in person' (face-to-face) counselling as well as Zoom and telephone consultations.

Email or phone me to chat through the options, your first session is discounted to see if you think this may work for you.

Sessions available daytime, evenings & weekends.



Text or call **07881 945779**

E: naomikefford@gmail.com

www.naomikeffordcounsellor.com



FUNERAL DIRECTORS AND MEMORIAL STONEMASONS



Robert, Chris, Andrew & Michael Lodge

OUR FAMILY HELPING YOUR FAMILY

For over 240 years, seven generations of the Lodge Family have been privileged to help local families in their time of need. We provide all funerals, whether modern, traditional, green or alternative, with care and compassion.

BURPHAM: 204 London Road 01483 615031

GUILDFORD: 70 Woodbridge Road 01483 562780

Branches also in Woking & West Byfleet

Lodge
BROTHERS 1780
the family you can turn to

Lodge
BROTHERS 1780
& Monk

www.lodgebrothers.co.uk



"The staff at Lodge Brothers have been sympathetic, understanding and supportive. They were with us every step of the way throughout a very difficult time and we are and will be forever grateful for their support."



Mr Robinson



ASK ABOUT OUR
PRE-PAYMENT
FUNERAL PLANS

FLORAL TRIBUTES • FUNERAL PLANS • WILLS & PROBATE

Exceptional Best UNSURPASSED
to earth 4.7 star reviews Customer Service Moving
Expertise Highly Recommended
Constant contact Professionalism
Burpham
experienced Estate agents
Trust Supportive Guildford
Helpful
Confident Communicative

Our reviews **speak** for
themselves...

All of the words above were used by our community to describe our teams and services. If you are thinking of selling your home, choose an agent your community trusts, Seymours.

Burpham

5 Kingpost Parade, Burpham, Guildford, GU1 1YP
Tel: 01483 300667

Guildford

6 London Road, Guildford, GU1 2AF
Tel: 01483 576833

seymours-estates.co.uk



Your property partner for life