

Local advertising and news magazine, delivered free to over 3,000 homes.
Includes Burpham Community Association newsletter.

Burpham Pages

May &
June
2024

Incorporating Jacobs Well

Burpham Summer Walks.
Free local summer walks,
organised by Burpham
residents for the enjoyment
of Burpham residents.

The Green Man. A fictional
story based on the factual
history of the Green Man pub
in Burpham intertwines the
mythical Green Man.

**Welcome to the new Vicar
of Burpham.** We are delighted
to announce that Reverend
James Hanson will be joining
us from Alfold & Loxwood.

www.burpham-pages.co.uk



Scan QR code
to read Burpham
Pages online.

Includes: Community Update from the Burpham Community Association



Do you find financial decisions a bit of a headache?

Get rid of the pain with Price Ferguson

Price Ferguson is a leading wealth management and financial planning firm based in Guildford.

Examples of our areas of expertise include:

- Inheritance tax planning
- Pensions and retirement
- Wealth management
- Financial planning



To book a free, no-obligation initial meeting, please get in touch by phone (01483 456477) or email michael@priceferguson.com

**More information is available
on our website: www.priceferguson.com**

Price Ferguson is authorised and regulated by the Financial Conduct Authority
Registered in England & Wales Company No. 03893166

Burpham Pages

Incorporating Jacobs Well

Local advertising and news magazine, delivered free to over 3,000 homes. Focussed on the local community and the services available in the general area. Includes Burpham Community Association newsletter.

www.burpham-pages.co.uk

Editorial

Editor **Paul Nicholls**

Contributors **Leah, Ros Redfern, Moira MacQuaide, John Boon, Jane Agg, Christine Sciberras, Susan Martineau**

Production

Original design

Generator **Creative Consultants**

Printed by **Kingsley Print**



Doing our bit for the Environment

Our printers are ISO 14001 environmental accredited, use vegetable based inks to print the magazine and recycle all waste paper and materials.

To mitigate the CO₂ emissions created in the production of our paper 'Carbon Capture' contributions are paid to the Woodland Trust who will plant woodland at one of their accredited woodland creation sites in the UK.

To find out more please visit www.woodlandcarbon.co.uk and www.woodlandtrust.org.uk

Contact Us

For advertising and general enquiries:

☎ 07597 904755

@ editor@burpham-pages.co.uk

✉ Burpham Pages, PO Box 1520, Guildford GU1 9WQ

✉ @burphampages

📷 @burphampages

📘 facebook.com/burphampages

Advertising copy deadline

for July – August 2024 issue is **3rd June 2024.**

Whilst care has been taken to ensure that the information contained in Burpham Pages is accurate, the publishers take no responsibility for the accuracy of statements made by advertisers, and accept no responsibility for any omissions or errors which may occur. Advert prices and dimensions are shown on our website www.burpham-pages.co.uk

Burpham Pages is a trading name of **Brand Era Limited**. Registered in England & Wales No. 08915898. Registered office: 7 Way Court, Mary Road, Guildford, Surrey GU1 4QU

Cover image: by Stephen Hunt at Unsplash

Welcome

Dear Neighbours, as April brings unexpected cold, I eagerly await May's warmth. Despite the chill, I'm pleased to share the latest Burpham Pages, full of community updates and stories.

In this edition, we delve into the efforts of the **Community Foundation for Surrey** as they raise funds to tackle poverty in our county. It's heartening to see initiatives aimed at addressing such pressing issues.

Hedger's Almshouses invite new trustees to join their 60-year legacy of serving Merrow. It's a chance to support a valued institution in our community.

The **Burpham Community Association** kicks off the excitement for summer with the launch of **Burpham Summer Walks 2024**, commencing on June 15th. It's a chance for us to come together and explore the beauty of our surroundings.

In light of the shortage of care workers, **Home Counties Carers** stress the importance of finding individuals with the right values to provide essential care to our community members.

Local student Leah showcases her talent with a fictional story based on the true facts of the old **Green Man** pub, intertwining the myth of the Green Man. It's a testament to the creativity and heritage that flourishes in the schools within our village.

The **Burpham Community Association** offers their insightful update, addressing pressing issues. We also welcome the new vicar at **Burpham Church**, marking a new chapter in our spiritual community.

Chris Sciberras from **Melita Fitness** sheds light on the unexpected benefits of exercise, while **Moira MacQuaide**, local historian, takes us on a journey back to Burpham Primary School in the 1920s.

I hope you find this issue of **Burpham Pages** both enlightening and enriching as we come together to celebrate the vibrancy of our community.

Paul Nicholls (Editor)

editor@burpham-pages.co.uk

Contents

5 **News & events**

10 **What's on this month**

12 **Burpham Pages crossword**

16 **Community Update – BCA**

18 **The Green Man – A Burpham Story**

20 **Unexpected Benefits of Exercise**

22 **1920s Burpham Primary School**

26 **The new Vicar of Burpham**

29 **Gardening Hints & Tips**

30 **Useful Numbers**



KINGSLEY

EST. 1981

LARGE FORMAT | DIGITAL | LITHOGRAPHIC

FOR ALL YOUR PRINT REQUIREMENTS

Please call 01784 430533 or visit

www.kingsleyprint.co.uk



TREE SURGERY & LANDSCAPING

**LOGS & WOODCHIP
SUPPLIERS**

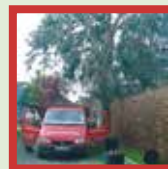
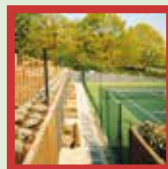
QUALIFIED AND INSURED

24HR EMERGENCY SERVICE

FREE QUOTATIONS

Based in Merrow and established in 1992, Roots & Shoots is a family-run tree care company which offers a professional and comprehensive arboricultural and landscaping service. We take great pride in our reputation and we offer all our clients a professional, courteous, and personal service. All our tree work is done to British Standards 3998 and is carried out to the highest standards by qualified staff.

We aim to ensure the conservation of trees through proper pruning practices. By embracing the latest research and modern techniques we provide the very best care for your trees, and with this in mind, we are happy to provide free advice and estimates.



Checkatrade.com
Where reputation matters

Call 01483 503361 **or** 07768 456828

Email enquiries@rootsandshoots-treesurgery.co.uk

www.rootsandshootssurrey.co.uk

Local news & events: get involved and tell us more about your news and events organised in Burpham, Jacobs Well and the surrounding areas.

Making a Difference to local families in need



The UK is facing its biggest cost of living crisis in decades, the news is full of war, natural disaster, and climate change, and it can all feel very overwhelming. How can I possibly help? Where to start?

There is something you can do on a very local level, to help people in Surrey who are really struggling. People who are working hard, maybe juggling multiple jobs, but who still have to choose between eating themselves or feeding their children, or between heating and food. **The Community Foundation for Surrey** can double your donation at the moment thanks to **Surrey County Council** who have pledged to match donations – so every £5 becomes £10. We are raising as much money as we can to support local Surrey organisations helping local people who are living in poverty.

Just under 1 in 10 Surrey children

aged 15 and under are in absolute low income households – this means their families do not have the minimum amount of income needed to meet their basic living requirements. The vast majority of these children have parents in work – but their wages have not kept pace with rising costs. In Surrey this poverty exists in pockets – across the street from others living in very comfortable circumstances. This means it can become invisible to us.

Through the **Tackling Poverty Campaign**, **CFSurrey** channels donations into grants that directly impact individuals and families across the county, ensuring they

have access to the resources they need to stay warm, fed, clean and in suitable accommodation.

These grants support a range of essential services, including fuel poverty assistance, provision of warm clothing and blankets, community meal programs, and emergency financial aid for struggling households. Every pound donated goes towards making a tangible difference in the lives of our neighbours, helping to alleviate the immediate hardships they face.

Examples of funding we have already been able to provide include:

Headway Surrey

- Funding to enable a charity supporting people with brain injuries to offer cost of living crisis support.

Oakleaf Enterprise

– money matters and wellbeing

- Funding for a Guildford based charity to provide a weekly drop in to support people with the cost of living crisis.

The Tackling Poverty Campaign

cannot succeed without the generosity of our community. Your contribution, no matter how small, can make a world of difference to those in need. Together, we can ensure that no one in Surrey is left behind. Join us in spreading warmth, compassion, and hope throughout our community.

To donate and make a difference, visit our website: www.cfsurrey.org.uk

Thank you for your support. ■



Whilst care has been taken to ensure that the information contained in Burpham Pages is accurate, the publishers take no responsibility for the accuracy of statements made by, nor the opinions of, contributors, and accept no responsibility for any omissions or errors which may occur.

News + Events

Sixty years in merrow



Hedger's Almshouses, Wykeham Road in Merrow.

A recent survey proved statistically that almshouse residents tend to live a bit longer (2½ years !) than they might otherwise have done, thanks to the community spirit they foster.

Hedger's Almshouses, Wykeham Road, is a charity which has been situated in Merrow for almost 60 years. Before 1965 the dwellings were in London, tucked between Lambeth Palace and the railway lines going into Waterloo. The buildings had suffered bomb damage and were badly in need of modernisation – for instance, there were no bathrooms. Hot water had to be fetched from the Warden's boiler or a trip to Lambeth Baths was necessary. The Trustees decided to sell up and begin again outside London. Several sites were considered but turned down, being too remote from shops or too close to motorways. However, the Managing Trustee, Lilian Disney (née Hedger), happened to be a neighbour of Alderman Wykeham Price, former Mayor of Guildford. He heard about the search for a site and knew that the **Poyle Trustees** had just acquired Merrow House which had been bequeathed by its last owner, Major Browell, expressly for the purpose of

housing the elderly. To raise capital, the Poyle Trustees needed to sell off part of the garden. What could be a better match than to sell it to another charity to build 8 bungalows for 'poor widows or spinsters of good character not less than 50 years of age'? *

Hedger's acquired a beautiful, peaceful garden site and Wykeham Road was named at the request of Mrs Disney in honour of Colonel Wykeham Price 'through whose introduction the new site had been obtained'. In September 1961, she recorded in the Minutes that the naming of the 'new road off Bushy Hill Drive as Wykeham Road' had been approved.

In 1963 building started and by 1965 a warden and 7 residents had moved in. Since then, we have continued to modernise the bungalows as best we can while keeping maintenance contributions (rent) affordable. Fireplaces with coal-burning back boilers are gone. Instead, the



bungalows have central heating and double glazing, and Bosch condensing boilers which heat water directly off the mains. The coal bunkers became spaces for fridge/freezers, the bathrooms are walk-in shower rooms. We maintain them to a high standard and invite applications to occupy from single women of 'modest' means able to live on their own independently. Generally, residents are retired from employment and over 70 years in age, but this is not always the case.

Thanks to an amazing team of resourceful and dedicated Trustees, we have been able to keep costs down while providing housing of the best possible standard. Our Trustees have all been exceptionally lovely people and we are grateful to them all.

We are currently looking for new Trustees who live locally, so if you are interested in helping us we would welcome your interest.

For more information, do please contact me at susan@edmart.plus.com or call **01243 555778**.

Susan Martineau, Clerk to the Trustees of Hedger's Almshouses.

Whilst care has been taken to ensure that the information contained in Burpham Pages is accurate, the publishers take no responsibility for the accuracy of statements made by, nor the opinions of, contributors, and accept no responsibility for any omissions or errors which may occur.

Burpham Summer Walks 2024



The 'Chinese Bridge' – footbridge in Painshill Park, Surrey, England.

Burpham Summer Walks are . We go out if it drizzles but not if it pours. If you write to secretary@burphamca.org.uk, we will put you on a circular that warns you by email first thing in the morning if the walk is postponed.

Saturday 15 June

Chilworth Powder Mills

This early industrial site is an easy walk along the ruins of a gunpowder factory strung along the **Tillingbourne** river, dating back to the 1620s. At each stop, we will learn about the stages of gunpowder production as it progressed along the line of buildings, getting riskier at each stage. The site is unusual and of historical interest, but it is also beautiful and hushed, nestled in woodlands. Chemical engineer **Graham Rutherford** and wife **Liz** will lead the way. Meet at 10.00 at the junction of **Blacksmith Lane** and **Halfpenny Lane** in Chilworth on the edge of Guildford. Park in either road.

Saturday 29 June

Frensham Ponds

We will take a circular walk around **Frensham Little Pond** including lovely

views over **Frensham Great Pond** and a visit to the **Robertson memorial**. We will also be shown around Lowicks, a beautiful weekend cottage designed by Voysey, and courtesy of the current owner. Mainly flat with a modest incline to the house. **Niels Laub** will guide us on our way.

Saturday 6 July

Painshill Park

The glorious gardens of **Painshill Park** in Cobham were created by Hon. Charles Hamilton in the C18th, inspired the grandeur of Italian landscapes. But they contain a surprise: purpose-built follies such as the Crystal Grotto, the Ruined Abbey and even an entire home-made Alpine valley. Entry is £10 each if we go as a group but just tell us if you are un-waged and we will cover costs. We have a world expert in follies – **Andrew Plumridge** – to guide us around the flat

pathways. Park in the car park, and meet up at the ticket office at 10.00. Beware of a slight delay at the M25/A3 roadworks. Let us know if you wish to join the group via secretary@burphamca.org.uk.

Saturday 20 July

Whitmoor Common

We will pick our way across the sandy heath of **Whitmoor Common** and take the boardwalk through the marshy low-land area. We can take in, at a modest distance, the woodland house once owned by Prime Minister Lloyd George, then visit the romantic graveyard of **St Mary's** church on the edge of the common. There we will visit the 1000-year old church in the company of the Rector and look at some stunning grave monuments. Park in the **Salt Box Road** car park (not Brittens Pond). It is midway between **Worplesdon Road** and the junction with **Grange Road**. 10.00 start from the car park.

Saturday 27 July

The Wey Navigation

Starting at the car park at the end of **Bowers Lane** at 10.00, we will walk up England's oldest canal – the navigation-passing England's first lock then on to **Stoke Mill**, now the home of the Surrey Advertiser, but previously a corn mill. We will be taken on a rare tour of the building. Afterwards we will return via the the board walk in **Riverside Park**.

Followed by...

Saturday 27 July

The village tea party

Starts: 12.15 After the walk along the **Wey Navigation**, we will head for the **Village Hall** in Burpham Lane for a free outdoor tea party of scones and jam, tea and cake. We will be joined by **Burpham Community Association** residents who have not been able to walk with us this year.

Whilst care has been taken to ensure that the information contained in Burpham Pages is accurate, the publishers take no responsibility for the accuracy of statements made by, nor the opinions of, contributors, and accept no responsibility for any omissions or errors which may occur.

Have you ever considered a career in care?



Julie, a recent recruit who joined Home Counties Carers last summer.

The shortage of care workers across the UK is well documented and with an ageing population, the demand for carers is on the increase.

There are currently a staggering 152,000 vacancies in the care sector so at **Home Counties Carers** we are not alone in looking for the right recruits with the right values.

Julie is a recent recruit who joined Home Counties Carers last summer, having previously worked in hospitality for many years. It was great to catch up with her and to find out how she is getting on in her new job and also to discover if the move to 'care' was a good move for her. Julie was beaming all over her face when we met, and she was delighted to be given this opportunity to share her personal experiences with me.

She has lived locally for many years and loves that she can work at the heart of a community that she truly loves. "It was a big decision for me to make a complete change of direction work wise, but I am so glad that I did, and that I found my way to Home Counties Carers."

In fact, Julie absolutely loves her new job. She said, "It is so satisfying to genuinely make a difference to our client's lives. I feel very honoured to be invited into people's homes to help them to continue to live independently. One visit may be for a coffee and a chat, the next, a client might need a bit of shopping done, and of course, for others they might need more personal

care, but no two days, or clients, are the same. It's never dull and I never grow tired of being so appreciated, it's lovely. The training I have received means I am confident in my job, but if I do need any help or advice, there is always great support available.

"This job also works well with my family. To a certain degree I can manage my own time, obviously I always arrive at appointments on time. I never forget that, for this client I might be their only human contact that day, and if I say I'm arriving at 10am, that's what I do. But, if I need to go to the dentist or to an appointment with one of my sons, and I ask our care coordinator in advance, she will make my rota work around my family needs.

"It is so satisfying to genuinely make a difference to our client's lives. I feel very honoured to be invited into people's homes to help them to continue to live independently."

"A big surprise to me has been that most days I don't feel like I am at work, as I said earlier, I get a real boost from making a difference in people's lives. I'm proud to wear my green uniform in the village too! It's a great company to work for. I am part of a very supportive team; I never feel alone and as I said I just love that I feel appreciated every day. Honestly, if you are fed up with your current job, I highly recommend that you give this a go – you might be surprised and find that caring for others brings so many rewards."

Thank you so much Julie we are delighted you found us too!

Ros Redfern, Recruitment Manager at Home Counties Carers. ■

Whilst care has been taken to ensure that the information contained in Burpham Pages is accurate, the publishers take no responsibility for the accuracy of statements made by, nor the opinions of, contributors, and accept no responsibility for any omissions or errors which may occur.

**Could you
be a
home care
hero?**



**Home
Counties
Carers**



Helping people at home



We are a close-knit family run Home Care provider.
We are committed to providing our clients with a friendly & reliable service, with staff who genuinely care.

We greatly value our award-winning team of *Home Care Heroes*.
We are looking for more *Heroes* to join our team now!

Are you friendly, reliable, trustworthy & competent?

Call Ros today on **07355 035 682**
Or email recruitment@homecountiescarers.co.uk

homecountiescarers.co.uk

If you want a dentist who is caring and who listens then Waterden is the place for you.

There's no reason not to smile!



Waterden
DENTAL PRACTICE

www.waterdental.co.uk

01483 565 290

Dental Implants | Facial Aesthetics | General Dentistry | Cosmetic Dentistry | Teeth Straightening

Implants help restore smiles

- Look, feel & work like real teeth
- Stabilising for bridges & dentures
- Interest free credit available

Transform your teeth with braces

- Fast, invisible brace options
- Staggering results in weeks
- Payment options

Affordable smile makeovers

- Perfect your smile in just 1 visit!
- Whitening & brightening solutions
- Discounts for upfront payments

Waterden Dental Practice 4 Waterden Road, Guildford, Surrey GU1 2AW

8th May 2024

GTA Filmfest – A Day of German Films



Guildford Twinning Association Filmfest 2024. Admission is free but booking

essential. All award winning films with English subtitles.

Time of event: 3.00pm to 9.00pm

Location of event: The Teaching Block, University of Surrey Campus, Stag Hill, Guildford, GU2 7AP

3.00pm

Nosferatu

5.00pm

Sophie Scholl:

Die Letzten Tage (The Last Days)

7.30pm

Lola Rennt / Run Lola Run

Further details: guildfordtwinning.uk/our-events/filmfest-2024

9th May 2024

Coffee Concert at Guildford Cathedral



All are welcome to come and join us for our May Coffee Concert. This month,

we look forward to welcoming back to the Cathedral pianist **Yoon Seok Shin**. Yoon has developed a busy inter-national career as a solo recitalist, concerto soloist and chamber musician.

Teas and coffees are served from 10.30am. Concert begins at 11.15am and finishes at 12 noon, just in time for lunch! **All are welcome to this free concert**, no need to book and free parking. **Seasons Café** will be open for a delicious lunch, and our gift shop is open for a browse for any special present buying.

Time of event: 10.30am

Location of event: Guildford Cathedral, Stag Hill, Guildford, Surrey, GU2 7UP

Further details: www.guildford-cathedral.org/events/coffee-concerts

Saturday 1st June

Blooming Picnic in the Castle Grounds



Guildford Castle Grounds, Castle Hill, Guildford GU1 3SX.

Gates open at 12 noon and there will be live music until 4pm.

Bring your own picnic! Tea, coffee, cakes, ice cream and Pimm's will be available to purchase. You can bring chairs or a blanket but please no tables or gazebos.

Well behaved dogs are also very welcome but must be kept on leads. Please also be aware the area gets loud and busy so nervous dogs may well not enjoy the experience.

There will be various stalls from local charities and partners for you to visit – including facepainting for the children (and adults if you like!)

We look forward to seeing you there!

For further details visit: <https://www.guildfordinbloom.com/picnic-in-the-castle-grounds>

Sunday 2nd June 2024

Mayor of Guildford's adult charity football tournament



The tournament, sponsored by **Martin Grant Homes**, aims to raise funds for the Mayor of Guildford's charity of the year, **The Fountain Centre**.

Teams from all walks of life are invited to sign up for this inclusive six-a-side adult tournament. Men's, women's, and walking football teams are all

encouraged to register and compete for the prestigious **Mayor's Cup** and **Mayor's Plate**. Squads of up to ten players should register their spot early to avoid disappointment.

Register here: www.sportsreg.co.uk/event/MCT2024

Cost per team : £100.00

Time of event: 10.00am to 3.00pm

Location of event: Stoughton Recreation Ground, Worplesdon Road, Guildford GU2 9RT

Culminates with the champion's ceremony, finishing at 3.00 pm.

This event is about more than just football. Alongside the exhilarating matches, family and friends can enjoy a range of family friendly activities.

- Chelsea FC Foundation will take keen young footballers through their paces
- Climb aboard a fire engine, chat with Surrey Fire & Rescue firefighters
- Bouncy castle
- Creative face painting

The money raised will help **The Fountain Centre** continue supporting cancer patients and their loved ones through a cancer diagnosis.

Mayor of Guildford, Cllr Masuk Miah said: "This tournament not only provides an opportunity for friendly competition, but it also allows us to come together as a community and make a positive impact for a great cause."

"Even if football's not your game, there's something for everyone to enjoy. The festivities will also include a delicious Indian food, a BBQ and a beer tent offering a selection of beverages. I'm so grateful to **Guildford City Boys and Girls FC** for hosting the tournament and **Martin Grant Homes** for its generous sponsorship of the whole event."

Do you have any events happening in and around Burpham & Jacobs Well that you would like added in the next issue?

Our next issue of Burpham Pages will cover July & August 2024. If you would like your event, happening during this period, added to our 'News & events' or 'What's on this month' sections please e-mail the details to editor@burpham-pages.co.uk before **3rd July**.

Bullimores



Accountants for Life

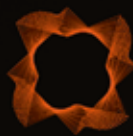
**Tax • Accounts • Probate
Inheritance Tax &
Executorship**

T: 01306 880880

E: partners@bullimores.co.uk

W: www.bullimores.co.uk

Bullimores LLP licensed to carry out the reserved legal activity of non-contentious probate in England & Wales by the ICAEW



SHALES Electrical

SERVICING GUILDFORD AND THE
SURROUNDING AREAS

- FULL AND PARTIAL REWIRES
- FUSEBOARD UPGRADES
- LED LIGHTING
- EXTRA SOCKETS
- FAULT FINDING
- EXTERNAL LIGHTING

CHECK OUT OUR
WEBSITE WITH THE
QR CODE BELOW



FULLY QUALIFIED AND INSURED

CONTACT NOW FOR A FREE QUOTE
TSHALES@HOTMAIL.CO.UK

07873 639159

WWW.SHALESELECTRICAL.CO.UK

Summer Theatre Highlights



2-11 MAY



Party Games!

A hilariously acerbic new political comedy

21-25 MAY



The Kite Runner

Based on the international bestselling novel

2-6 JUL



The 39 Steps

'A JOYOUS VERSION OF THE HITCHCOCK CLASSIC'
★★★★ THE SUNDAY TIMES

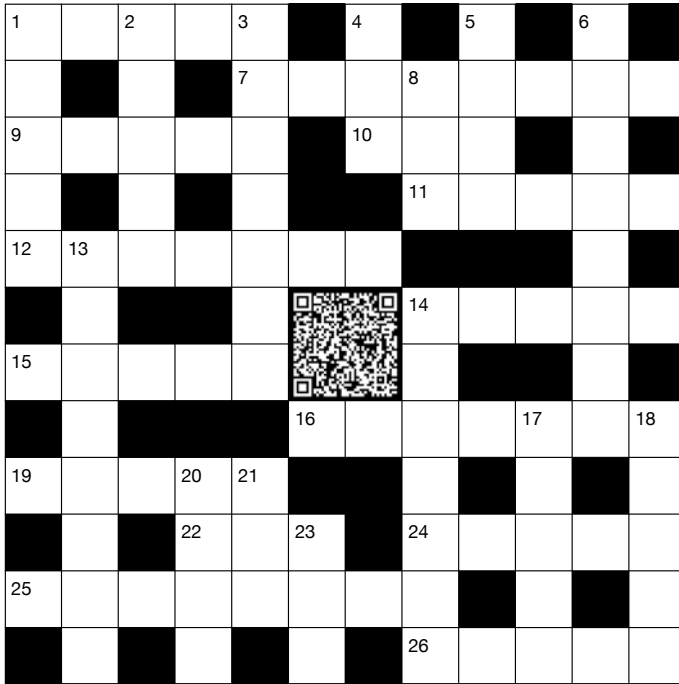
YVONNE-ARNAUD.CO.UK | BOX OFFICE 01483 44 00 00

Millbrook, Guildford, GU1 3UX

Burpham Pages Crossword

Crossword No. 35
May & June 2024

© Burpham Pages



Across

- 1 British record label established in 1929 (5)
- 7 Prepared and cooked squid (8)
- 9 To slowly reduce or destroy something (5)
- 10 'Hello' in Spanish (3)
- 11 To suggest something without saying it directly (5)
- 12 Something bought for less than the usual price (7)
- 14 Slight smell, carried on a current of air (5)
- 15 To reduce or become less intense (5)
- 16 Building where soldiers live (7)
- 19 Wrapped sweet on a stick for sucking or chewing (5)
- 22 Cereal crop (3)
- 24 Unpleasant smell (5)
- 25 Iconic Italian dessert (8)
- 26 Eighth letter of the Greek alphabet (5)

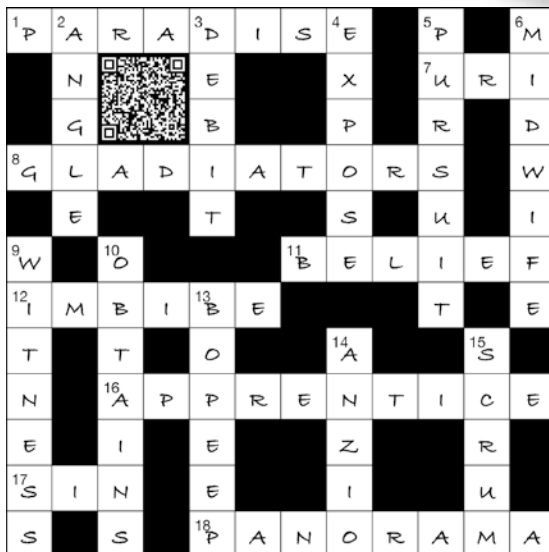
Down

- 1 US university slang for one who is socially inept or foolish (5)
- 2 Group of people who sing together (5)
- 3 Thin, clear plastic used for overhead projectors (7)
- 4 Bod's Aunt in the children's animated series (3)
- 5 Prayer leader of a mosque (4)
- 6 Highly productive (8)
- 8 Muhammad; American pro boxer and activist (3)
- 13 The food of the gods (8)
- 17 Love someone very much (5)
- 18 Action bringing upon oneself inevitable results (5)
- 20 Something carried, often by a vehicle (4)
- 21 Starchy vegetable that grows underground (3)
- 23 Soft silver-white metal (3)

Solution to Crossword No. 34

Burpham Pages issue No. 109
March & April 2024

The solution to each crossword will be published in the following issue of Burpham Pages as well as on our website www.burpham-pages.co.uk
For the May – June 2024 solution please see our July – August 2024 issue.



Independent salon based
in Fairlands with FREE Parking.

New clients receive 10% off their
first service, or bring this advert with
you to your appointment and mention
when booking to receive

20% off

your first service as a new client.

01483 232769

info@charleybrowns.co.uk

www.charleybrownshairguildford.co.uk

51 Fairlands Avenue, GU3 3NB

1 offer per new client. T&Cs apply*



WEATHERSURE

ROOFING & BUILDING LTD

BASED IN COBHAM & EFFINGHAM

New & Old Roofs • All Roof Repairs • Flat Roofs

UPVC Fascia Boards • Soffits • Cladding • Guttering • Down Pipes • Apex Boards

Gutter Clearance • Exterior Painting & Decorating • Chimney Restoration

Barge Boards • Re-pointing Ridge Tiles & Walls • Moss Removal and Roof Cleaning

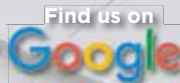


**ALL
WORK
FULLY
GUARANTEED**

**FREE
ESTIMATES
AND
ADVICE**



Credit Cards Accepted



Full Public liability Insurance • Please view our references

410 Lower Road, Effingham, KT24 5JP

Newmarsh Farm, Horsley Road, Cobham, Surrey KT11 3JX

Contact William (proprietor)

T: 01483 378334 T: 01372 885695 M: 07470 088047

E: info@weathersureroofing.co.uk

www.weathersureroofing.co.uk



Guide Price £875,000

Great Oaks Park

Fine four-bedroom family home offering well-planned and well-proportioned accommodation, within walking distance of several excellent schools. Features of note include the open plan/kitchen/dining room/conservatory which overlooks the beautifully laid out rear garden and a loft, which subject to the relevant consents, could be converted to offer further bedroom space. **Tenure Freehold. Council tax band F. EPC Rating: D**

Merrow & Burpham Office 01483 347100



If you are thinking of selling, call our
Merrow & Burpham office on 01483 347100

Guildford Sales 01483 405222
guildford@chantriesandpewleys.com

Merrow & Burpham Sales 01483 347100
merrow@chantriesandpewleys.com

What's in store for the property market in 2024?

After a rather sluggish January & February, the market has finally kicked into gear and the second half of March was much busier for many of our clients.

Whilst some market commentators felt buyers were waiting for the budget, or the Bank of England to meet and decide what to do with the base rate, I think it was down to properties being priced correctly, to accurately reflect the current economic conditions. Two thirds of March's sales were properties that had previously been on the market with other agents, often at higher prices.

So what does that tell us? Getting your headline price is absolutely vital - the market is flat at the moment, so if you want to sell in a timely manner, then you need to be on for the right money. If you're not, you'll have a smattering of viewings but no offers and the longer the house is on the market at the wrong price, the more difficult it is ultimately to sell.

When you have agents out to value your house, ask them what evidence they have to back up their suggestions on price - they should be able to show you several comparable sales of houses like yours. If they can't they haven't done their homework. Ask them how long they've worked in Guildford for - I've worked the patch for 29 years, but put me in Kingston or Devon and I wouldn't have the first clue on what a property is worth! Local experience matters. Beware the agent who gets a bonus just for listing your house on the market - sadly, they won't care whether it sells or not! We're only paid when you actually move house, so it is very much in our interest to give you sound, sensible advice that will help you achieve your goal of selling. Finally, if your agent has over-valued your home, don't reward them with a price reduction - quite frankly they don't deserve it. Check the terms of your contract (don't sign up for more than 6 weeks!) and then take your house to another agent as soon as you are able, and give them the house at the right price.

If you want honest, sensible advice from a company that puts your needs first, please call us on 01483 347100.

Anthony Brown, Director
2nd April 2024





Welcome to the **Burpham Community Association**

Community Update

May & June 2024

Pharmacy Provision

At the time of writing (late March), the BCA understands that an appeal is in progress against the rejection of an application to open a pharmacy on Kingpost Parade.

Apparently, the rejection was based on an assessment made prior to the closure of the Lloyds pharmacy at Sainsburys. The appeal process can take four to six months, depending on the need for an oral hearing.

A second application has recently been submitted for a new pharmacy in Kingfisher Drive. This process takes up to four months. For more details see <https://www.surreyheartlands.org/pharmacy-provision-in-burpham-and-merrow-guildford/>

crossing point will be installed between Winterhill Way and London Road.

- The scheme to make Boxgrove roundabout safer for pedestrians and cyclists will be implemented.
- The council will not be taking forward the proposed further active travel interventions on London Road between Boxgrove Roundabout and York Road.

No timescale is given for the review of Section One or the changes to Boxgrove roundabout – the BCA will inform members when any further news is received.

For more details see <https://news.surreycc.gov.uk/2024/02/27/way-forward-agreed-for-walking-and-cycling-route-in-burpham/>

in general and New Inn Lane in particular, whatever the location of the site access.

MG will be carrying out detailed modelling of the traffic impacts of the scheme, including New Inn Lane and the London Road roundabouts with New Inn Lane and Clay Lane. We plan to meet again when these results are available.

They currently hope to submit a planning application around the end of 2024 with construction starting about 2 years later.

A wider public consultation will take place once their plans are firmer.

London Road Active Travel Scheme

Surrey CC announced on February 27th that:

- Section One of the scheme (from New Inn Lane roundabout to Boxgrove roundabout) will be subject to further review and decision at a later date, to ensure the needs of all road users have been considered. A new safer

Gosden Hill

The BCA and BNF met Martin Grant Homes representatives on February 27th to discuss transport links. The Highways Authorities plan to provide direct access to and from the A3 southbound only.

This will force traffic northbound and in most other directions to go through Burpham. We expressed our concerns about the likely effect on Burpham



Memorial Hall

We are – very slowly – getting closer to having the Hall back into community use.

In association with **Burpham Church, Burpham Wellbeing** and other interested sports and community groups, we have established a Charitable Incorporated Organisation to manage the Hall when it is not being used by the Nursery. We have agreed Heads of Terms with GBC, and it is with their legal advisers to draft a licence.

BCA on Facebook & Twitter!

Join the conversation! Open to members and non-members, it's a great way to stay up-to-date with everything that's happening in our community.

 twitter.com/burpham_c_a
 facebook.com/burphamCA/



GUILDFORD
COMMUNITY LOTTERY

Guildford Community Lottery

A way for everyone to support local causes and be in with a chance to win prizes of up to £25,000. **50% of all tickets sold from our page go to the BCA!**

Tickets only cost £1 per week, buy now at www.guildfordlottery.org/support/burpham-community-association

To get in touch with the BCA contact the committee on secretary@burphamca.org.uk phone **07513 366072** or visit the website at www.burphamca.org.uk

We represent the community of Burpham, Guildford

What are your priorities for Burpham?

The BCA is committed to helping everyone in the community, both residents and those who work in Burpham. In order to be as effective as possible we need to know what your priorities are.

The committee has come up with some suggestions, but we can't do everything! Have a think and let us have your top five suggestions, including any ideas not on our list, and please email your thoughts to us on secretary@burphamca.org.uk If you do not use email, you can leave a message on **07513 366072**.

Planning & Building Projects

- Monitoring Planning applications
- Impact of Gosden Hill development – infrastructure, traffic implications

Roads & Traffic

- London Road Active Travel Plan
- State of roads – potholes, subsidence
- Pollution – air and noise
- Parking issues

Environment

- Conservation and improvement, engaging with local heritage, history and culture

- Maintenance of waterways
- Flood prevention
- Water supply and sewage capacity.

Have a think and let us have your top five suggestions, including any ideas not on our list, and please email your thoughts to us on secretary@burphamca.org.uk

Public Amenities

- Defending existing amenities – halls (Sutherland Memorial Hall open to the community), playgrounds, seating etc.

Helping the Community

- Supporting local businesses, services and charities
- Health, wellbeing and safety for residents
- Supporting vulnerable members of the community



Communication & Liaison

- Informing the community of current issues
- Arranging events with speakers, hosting election hustings
- Organising communal events and activities
- Liaising with our MP, Borough and Council representatives, relevant organisations such as the Environment Agency and National Trust and neighbouring Residents' Associations.

Help by joining the Burpham Community Association today!

NB We never share your data or use it for any purpose other than informing you of BCA activities.

Subscriptions are £8 per household or £4 per single occupancy and run from January to December. Join now or renew your membership for 2023.

You can pay by:

Direct Debit – visit our website at www.burphamca.org.uk which has a link to this system – an email to treasurer@burphamca.org.uk giving your details would be helpful.

Online –

Account name: Burpham Community Association.

Sort Code: 40-22-26.

Account Number: 41049194

To help the Treasurer please identify yourself using initials, surname and the first line of your address.

Please contact Liz Turner, our Membership Secretary, if you have any queries. Her email address is membership@burphamca.org.uk

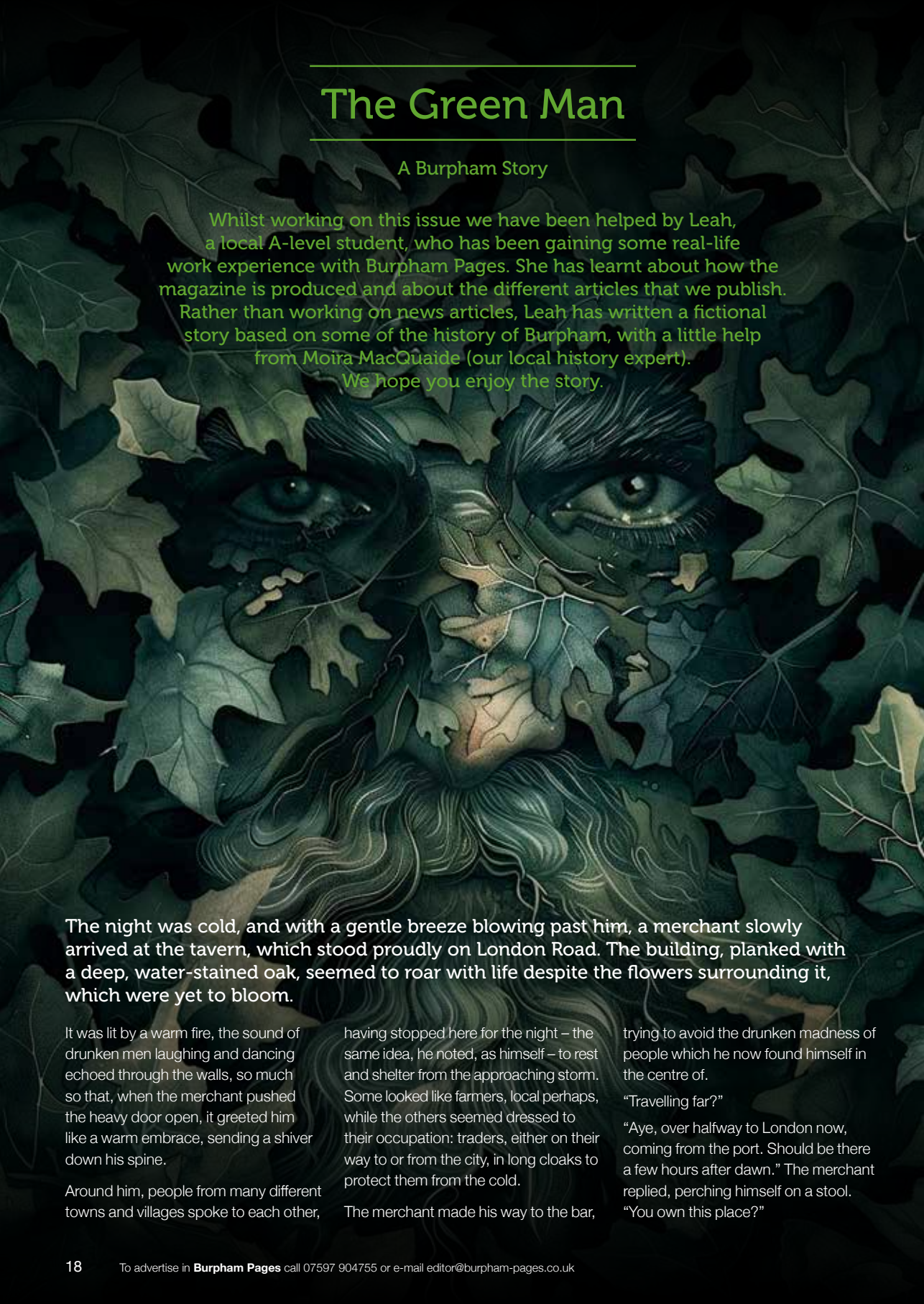
The Green Man

A Burpham Story

Whilst working on this issue we have been helped by Leah, a local A-level student, who has been gaining some real-life work experience with Burpham Pages. She has learnt about how the magazine is produced and about the different articles that we publish.

Rather than working on news articles, Leah has written a fictional story based on some of the history of Burpham, with a little help from Moira MacQuaide (our local history expert).

We hope you enjoy the story.



The night was cold, and with a gentle breeze blowing past him, a merchant slowly arrived at the tavern, which stood proudly on London Road. The building, planked with a deep, water-stained oak, seemed to roar with life despite the flowers surrounding it, which were yet to bloom.

It was lit by a warm fire, the sound of drunken men laughing and dancing echoed through the walls, so much so that, when the merchant pushed the heavy door open, it greeted him like a warm embrace, sending a shiver down his spine.

Around him, people from many different towns and villages spoke to each other,

having stopped here for the night – the same idea, he noted, as himself – to rest and shelter from the approaching storm. Some looked like farmers, local perhaps, while the others seemed dressed to their occupation: traders, either on their way to or from the city, in long cloaks to protect them from the cold.

The merchant made his way to the bar,

trying to avoid the drunken madness of people which he now found himself in the centre of.

“Travelling far?”

“Aye, over halfway to London now, coming from the port. Should be there a few hours after dawn.” The merchant replied, perching himself on a stool.

“You own this place?”

The old man he spoke to nodded. "Sometimes causes more trouble than it's good for- "someone around him laughed, and the old man swatted the sound away "Let me know if you need anything, boy." Pushing forward some beer, he turned away from the merchant, leaving him with the other men at the bar.

Having spent the last few hours on horseback, he did not entirely know why this particular tavern was the one he decided to rest at. He did not know much about the village, Burpham, he was in. And nor did he know why the figure sitting to his right had caught his interest. The man surrounded himself in a forest-green cloak, nothing more than his face visible – as if a man of his stature could obscure himself from any prying eyes. His beard seemed to be made of leaves, each a different shade of Spring, and he wore the smell of pine needles as if it were a perfume. He looked at the merchant, or rather, looked through him, with eyes that were too old, too young – like they had lived a thousand different lives, and had probably been pardoned by death himself.

The merchant had not realised he had been staring at the strange, green man. Rather, he tilted his head, wondering how no one else seemed to be paying any attention to the unusual figure.

He cleared his throat, "Where's someone like y-"

A crash sounded through the tavern. All heads turned. A chair had been thrown, and was now laying on the floor, broken, and spiked at odd angles.

A beat passed. Another. That's when the yelling started, two men tried shoving their way through the crowd, and time seemed to start again – although the merchant had still not taken a new breath.

The younger-looking man was the first to throw his fist. The other took the hit to the jaw.

Everyone watched the fight, most of them equally as drunk and now cheering for who they thought would win the fight.

Some threw down a few silver coins.

Before the next punch could be thrown, the green man stood behind the younger of the two men. With a single touch to the shoulder, he collapsed to the floor, snoring loudly. His opponent laughed just before he was subject to the same fate. Now everyone laughed, and during the midst of it, the green man slowly made his way, still unnoticed, out of the tavern.

The man surrounded himself in a forest-green cloak, nothing more than his face visible – as if a man of his stature could obscure himself from any prying eyes. His beard seemed to be made of leaves, each a different shade of Spring, and he wore the smell of pine needles as if it were a perfume.

He stopped, turned, and looking directly at the merchant, he waved goodbye, before turning back around and leaving the tavern in the laughing chaos.

The merchant sank into the stool. Who was this green man? He felt familiar. Not in the way that they had met before, but rather that the green spirit was just... there. Watching everyone at the tavern, the village, making sure that its inhabitants were safe. Protected.

"You alright?" The merchant looked up, seeing the owner of the tavern pouring another beer.

"That man," he replied, "who is he?"

"Which man?"

"The green man."

"He was here tonight?" the old man shook his head, chuckling. He handed the beer to another customer, before turning back to the now very confused merchant. "If the green man was here, tell him I say that he's early. Spring is not due for weeks."

"But who is he?"

"A spirit, perhaps. A story told to the children to get them to sleep at night." The old man paused for a moment, "some say that he is a savage, others say he is a protector; that he enchanted the lands to keep us safe, that the grass grows greener thanks to him. None of us know his true nature, and only few have claimed to even see him. Count yourself lucky."

The merchant waited in case he was going to say more, but the owner simply went back to talking to the other men around him. He wanted more answers. And he knew he would not find them sitting here. Before he even realised what was happening, the merchant's feet carried him outside, trying to somehow chase after a man no one could see.

He stood in the night and watched, unbothered by any noises coming from within the tavern. He saw how the trees rustled, how the moonlight danced off of the clouds, and he just waited for some sign of the green man. Nothing arrived.

After a while – it may have been minutes, it may have been hours – he turned to go back into the building. If the green man did not wish to be found, the merchant somehow knew that he would never be.

A warm breeze swayed past him, and he looked to the trees one final time. Nothing. Then he saw the flowers. They were in full bloom in the middle of Winter. Like the season was now an ancient bygone. The merchant smiled, and he could have sworn he felt the trees grinning back at him. The old man was right, Spring was early. ■

The Green Man pub in Burpham was demolished in 2008. Prior to that a public house had stood on the site for over 400 years and as a coaching inn it served the original route from London to Portsmouth via Guildford.

A green man sculpture, by Nick Bates of Burrows Lea Forge in Shere, on the side of the Burpham Aldi, pays respect to the pub that had stood on the site.

The unexpected benefits of exercise

Christine Sciberras, Founder and Head Coach at Melita Fitness

There must be thousands of articles that describe the benefits of exercising: muscle mass, longevity, cardio health, mental wellbeing, energy and so on. I know I've written a few! And while all those things are important, today I want to shine a light on some unexpected benefits of exercise.



"I walked up Ben Nevis with the family! My husband and teenage kids were so achy the next day. But I was fine! They refused to do any more walking, so I went off by myself!"

Conquering challenges that we thought were too hard is an amazing win. To be able to keep up with our children and family members, whether it's climbing a mountain or playing football in the garden, is priceless.

"I was new to the area and didn't know anyone. Now I have a community of women who support and motivate me every step of the way, and who I get to call my friends."

Finding a sense of belonging and community can be challenging. For many of our members outdoor exercise is the catalyst for building meaningful connections and friendships. We share stories, hold each other accountable and enjoy regular social evenings together.

"I loaded a skip with wheelbarrows full of concrete!"

Enhanced strength and better posture unlock a multitude of activities that were

once challenging and also safeguards against future injuries. Tasks like gardening, DIY, or moving furniture become more enjoyable. And it's a proactive approach to enhancing our quality of life both in the present and in the future.

"It's made me realise I am capable of so much more than I thought I was."

It's a common theme, especially with women who are new to exercise or weight training. Almost every person who starts a class, balks at the resistance weight that I suggest they start on. But within a few sessions, they're squatting, lunging and overhead pressing it confidently and competently. And this new confidence permeates into daily life. It gives you the willingness and belief to try new things.

"I no longer feel guilty about putting myself first and I feel so much better knowing I've taken some time out of the day just for me and my needs."

We're so used to dealing with everyone else's needs first and putting ourselves at the bottom of the pile. But it's clear that prioritising self-care

is transformative for many women. This shift in mindset is so beneficial to the individual. And it sets a powerful example for others, including our children, that it's OK to put ourselves first some of the time!

I can lift my 5 year old, 15kg, son on to my shoulders and carry him when he needs it. As he is disabled it is hard to know how much activity he has stamina for, it's so nice to just plonk him on my shoulders and carry on!

The ability to effortlessly lift and carry our children strengthens our parent-child bond and also facilitates moments of connection and playfulness. Whether it's lifting a child to get a better view or carrying them to bed after an exhausting day, the physical strength we gain through exercise instils a sense of confidence and reassurance. It empowers us to be more present, active, and responsive to our children's needs.

If you'd like to get started with exercise, you can try us free for a week: www.melitafitness.co.uk/freetrial

Generator.

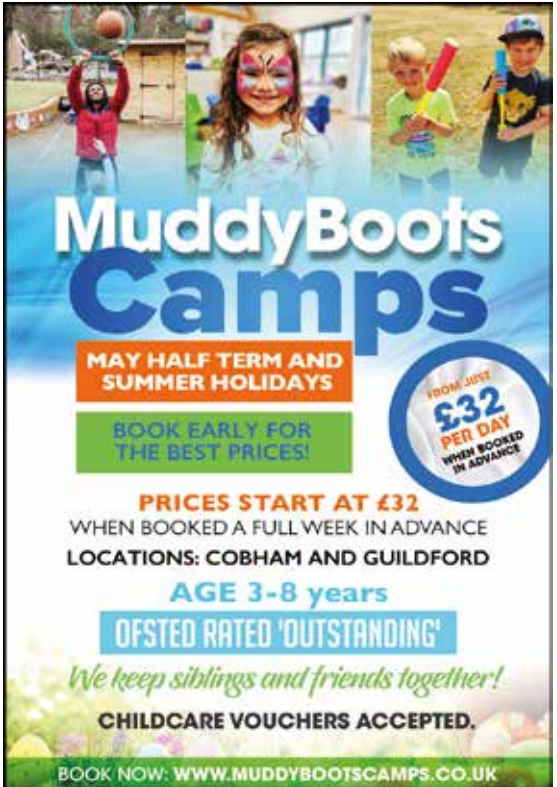
empowered by open-thinking

Brand strategy
Corporate identity
Website & digital
Online media

Design, branding and marketing services for all sizes of company from start-ups to corporations

Generator Creative Consultants Ltd
T +44 (0) 1483 205010
E empowered@generator-creative.com
www.generator-creative.com

Listen. Think. Create. Inspire



MuddyBoots Camps

MAY HALF TERM AND SUMMER HOLIDAYS

BOOK EARLY FOR THE BEST PRICES!

FROM JUST **£32 PER DAY** WHEN BOOKED IN ADVANCE

PRICES START AT £32 WHEN BOOKED A FULL WEEK IN ADVANCE

LOCATIONS: COBHAM AND GUILDFORD

AGE 3-8 years

OFSTED RATED 'OUTSTANDING'

We keep siblings and friends together!

CHILDCARE VOUCHERS ACCEPTED.

BOOK NOW: WWW.MUDDYBOOTSCAMPS.CO.UK

STILL THINKING ABOUT JOINING MELITA FITNESS?

For some of us it's all about the squats and lunges. (OK, that's mostly just me!)

For most it's about the community, the sense of being in it together, the friendships, the positive and supportive atmosphere. And the knowledge that we're doing something so beneficial for our health and wellbeing...

Start for the fitness...

Stay for the community...



Scan to get started with a **FREE WEEK**

FREE WEEK

www.melitafitness.co.uk
chris@melitafitness.co.uk

Burpham Primary School in the 1920s

Moira MacQuaide's history of Burpham



Impression of Burpham School circa 1908 by Kim Raymond (kimraymond.com)

In the 1920s, the world was struggling to get over the Great War and the Spanish Flu epidemic. At Burpham Primary School, which had been open since 1908, Miss Lancaster was still Head Mistress, but absences due to her health were causing problems.

The HMI (forerunner to Ofsted) report in 1921 identified improvements that were needed for the 41 children, who were recognised as willing to do their best and working hard. Many children had to travel significant distances to get to and from school, often suffering with wet feet due to flooding, especially along Jacob's Well Road (now Clay Lane). There was no electricity in the school, just oil lamps – neither gas nor electricity were installed until the 1930s. There was no central heating, just open fires in each classroom – requiring coal to be delivered and ashes to be cleaned out regularly. The toilets were in an outside block, but there was no mains sewage, so there was a cess-pool near to the entrance to the school (now under a flowerbed).

Throughout the 1920s both bad weather and sickness affected the school, and attendance was often

down to 50% of the total on the register. Occasionally the school had to close temporarily, due to influenza, or other health problems. In 1927 Miss Lancaster decided to retire due to her ill-health, after 19 years of setting up the school, managing through the war and the aftermath of that time.

The School Managers didn't seem to be very supportive, as in 1925 they discussed "the advisability of recommending to the Education Committee to close the Burpham Council School". The suggestion was that Burpham children could go to either Merrow or Worplesdon Perry Hill schools instead. The issue was deferred, but records show that for the



Inside the classroom (late 1920s).

CT CARS

always different



The small, local, friendly, **GREAT VALUE** garage.

Specialists in Audi, Volkswagen, Seat and Skoda Vehicles.

IMI Certified for Electric and Hybrid propelled Vehicles.



Servicing & Repairs according to manufacture guidelines

- Engine management diagnosis.
- Full Vehicle health checks.
- Replacement Genuine Keys.
- Work carried out using only Genuine Parts.
- Air conditioning service and diagnosis.
- Advanced Driver Assist System (ADAS) Calibration.
- Component Protection Removal.
- Software updates and much more!

Free Loan Car

Available while we work on your car.

What ever your needs you can count on us!



Tel: 01483 285792

Email: info@ctcars.co.uk

www.ctcars.co.uk

Find us on

Where to find us

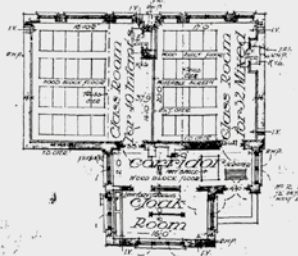
Open View Farm, Epsom Road,
West Horsley, Surrey. KT24 6AP

SURREY EDUCATION COMMITTEE. BURPHAM SCHOOL

Scale of Feet

NOTES -
 1. FINISH AS SHOWN
 2. ALL EXTERIOR WORKING DRAWING
 3. ALL ROOF WORKING DRAWING
 4. ALL ROOF WORKING DRAWING
 5. ALL ROOF WORKING DRAWING
 6. ALL ROOF WORKING DRAWING
 7. ALL ROOF WORKING DRAWING
 8. ALL ROOF WORKING DRAWING
 9. ALL ROOF WORKING DRAWING
 10. ALL ROOF WORKING DRAWING
 11. ALL ROOF WORKING DRAWING
 12. ALL ROOF WORKING DRAWING
 13. ALL ROOF WORKING DRAWING
 14. ALL ROOF WORKING DRAWING
 15. ALL ROOF WORKING DRAWING
 16. ALL ROOF WORKING DRAWING
 17. ALL ROOF WORKING DRAWING
 18. ALL ROOF WORKING DRAWING
 19. ALL ROOF WORKING DRAWING
 20. ALL ROOF WORKING DRAWING
 21. ALL ROOF WORKING DRAWING
 22. ALL ROOF WORKING DRAWING
 23. ALL ROOF WORKING DRAWING
 24. ALL ROOF WORKING DRAWING
 25. ALL ROOF WORKING DRAWING
 26. ALL ROOF WORKING DRAWING
 27. ALL ROOF WORKING DRAWING
 28. ALL ROOF WORKING DRAWING
 29. ALL ROOF WORKING DRAWING
 30. ALL ROOF WORKING DRAWING
 31. ALL ROOF WORKING DRAWING
 32. ALL ROOF WORKING DRAWING
 33. ALL ROOF WORKING DRAWING
 34. ALL ROOF WORKING DRAWING
 35. ALL ROOF WORKING DRAWING
 36. ALL ROOF WORKING DRAWING
 37. ALL ROOF WORKING DRAWING
 38. ALL ROOF WORKING DRAWING
 39. ALL ROOF WORKING DRAWING
 40. ALL ROOF WORKING DRAWING
 41. ALL ROOF WORKING DRAWING
 42. ALL ROOF WORKING DRAWING
 43. ALL ROOF WORKING DRAWING
 44. ALL ROOF WORKING DRAWING
 45. ALL ROOF WORKING DRAWING
 46. ALL ROOF WORKING DRAWING
 47. ALL ROOF WORKING DRAWING
 48. ALL ROOF WORKING DRAWING
 49. ALL ROOF WORKING DRAWING
 50. ALL ROOF WORKING DRAWING
 51. ALL ROOF WORKING DRAWING
 52. ALL ROOF WORKING DRAWING
 53. ALL ROOF WORKING DRAWING
 54. ALL ROOF WORKING DRAWING
 55. ALL ROOF WORKING DRAWING
 56. ALL ROOF WORKING DRAWING
 57. ALL ROOF WORKING DRAWING
 58. ALL ROOF WORKING DRAWING
 59. ALL ROOF WORKING DRAWING
 60. ALL ROOF WORKING DRAWING
 61. ALL ROOF WORKING DRAWING
 62. ALL ROOF WORKING DRAWING
 63. ALL ROOF WORKING DRAWING
 64. ALL ROOF WORKING DRAWING
 65. ALL ROOF WORKING DRAWING
 66. ALL ROOF WORKING DRAWING
 67. ALL ROOF WORKING DRAWING
 68. ALL ROOF WORKING DRAWING
 69. ALL ROOF WORKING DRAWING
 70. ALL ROOF WORKING DRAWING
 71. ALL ROOF WORKING DRAWING
 72. ALL ROOF WORKING DRAWING
 73. ALL ROOF WORKING DRAWING
 74. ALL ROOF WORKING DRAWING
 75. ALL ROOF WORKING DRAWING
 76. ALL ROOF WORKING DRAWING
 77. ALL ROOF WORKING DRAWING
 78. ALL ROOF WORKING DRAWING
 79. ALL ROOF WORKING DRAWING
 80. ALL ROOF WORKING DRAWING
 81. ALL ROOF WORKING DRAWING
 82. ALL ROOF WORKING DRAWING
 83. ALL ROOF WORKING DRAWING
 84. ALL ROOF WORKING DRAWING
 85. ALL ROOF WORKING DRAWING
 86. ALL ROOF WORKING DRAWING
 87. ALL ROOF WORKING DRAWING
 88. ALL ROOF WORKING DRAWING
 89. ALL ROOF WORKING DRAWING
 90. ALL ROOF WORKING DRAWING
 91. ALL ROOF WORKING DRAWING
 92. ALL ROOF WORKING DRAWING
 93. ALL ROOF WORKING DRAWING
 94. ALL ROOF WORKING DRAWING
 95. ALL ROOF WORKING DRAWING
 96. ALL ROOF WORKING DRAWING
 97. ALL ROOF WORKING DRAWING
 98. ALL ROOF WORKING DRAWING
 99. ALL ROOF WORKING DRAWING
 100. ALL ROOF WORKING DRAWING

THIS IS ONE OF THE DRAWINGS REFERRED TO IN A RESOLUTION OF THE COUNCIL OF THE SURREY EDUCATION COMMITTEE PASSED ON 12th DECEMBER 1905 & APPROVED BY THE SURREY EDUCATION COMMITTEE ON 14th DECEMBER 1905.



Ground Plan



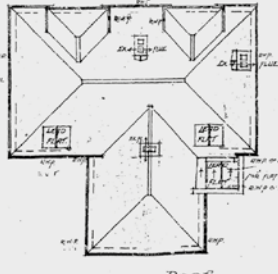
North Elevation



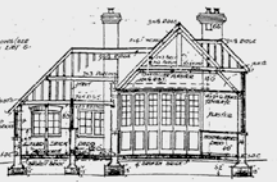
West Elevation



South Elevation



Roof Plan



Section DB

1

100

1001

0/8 4/3

Plans for original school building (1906).

28 children on roll, the approximate cost per child per annum was £16 1s 5d for 1928/29, and the teaching costs were around £360 per annum. A record in 1930 said "there is no indication of any material increase in the school population in the district" – if only they had known how much Burpham would grow over the next 50 years! Luckily, a change in boundaries in 1933 helped the Education Committee decide that Burpham Primary School was worth keeping.

In the mid 1920s the school got permission from the parents to take the children to the local river for swimming lessons – though they were let off on days when it was deemed to be too cold or showery for swimming. There were no hairdryers in those days, and most girls had long hair, so getting dry afterwards was a challenge.

In 1927 Miss E A Jacobs took over as Head Mistress, on the grand salary of

£225 per annum, for the next six years. In 1928 she complained about offensive smells, with the result that Guildford RDC came to empty the cess-pool. Before mains sewage systems the sewage was often flushed away through storm drains into local waterways – reminiscent of current problems!

The school has moved on over the next 100 years and there are now over 400 children and lots more staff there. The original school building still stands, but there are new buildings around the site. The last Ofsted report gave the school Outstanding status – much improved from 100 years ago. ■



Outside the school building (late 1920s).

If you are willing to share your memories and photos to tell us more about Burpham then please contact Moira MacQuaide, either by e-mail (moira.macquaide@gmail.com) or by phone or text (07963 756543). My book, **Burpham – A Gateway to Guildford** is still available from me for £10 (free delivery locally) or on Amazon, but the **History of Burpham Primary School 1908-2014** is now out of print (available to borrow at Guildford Library).

ZOEY HACKNEY

PROFESSIONAL PAINTING
& DECORATING

Qualified and fully insured

Local recommendations

Free, no obligation quotations

Reliable, skilled, friendly

t 01483 222830

m 07721 455554

e zoeyhackney@btinternet.com

MARK-ONE

DRIVEWAYS &
LANDSCAPING

Checkatrade.com



Mark-One Driveways & Landscaping are a family run business based in Guildford. We cover all aspects of driveways and landscaping.

Call today for a free estimate or advice.

Email mark-onedl@outlook.com

Call 07496 347569



wine RACK

216 London Road, Guildford
Surrey, GU4 7JS. Tel: 01483 572555
OPEN 10am-9pm 7 days a week!

"As a franchise of Wine Rack, we are a small, friendly, family owned business employing local people"

- Best range of Local Gins
- Best range of Craft Beer in Surrey
- Quality range of Wines & Champagnes
- Free Local Delivery (within 5 miles)
- E-cigs • Cigars
- Draught Beers
- 10% off when you buy 3 bottles of Wine

f [winerackguildford](https://www.facebook.com/winerackguildford)

i [winerackguildford](https://www.instagram.com/winerackguildford)

£5 OFF

WHEN YOU
SPEND £50
IN STORE!

VOUCHER VALID AT WINE RACK GUILDFORD ONLY. CAN BE USED ON ANYTHING EXCLUDING TOBACCO. ONLY ONE VOUCHER PER CUSTOMER. VOUCHER CANNOT BE USED WITH ANY OTHER VOUCHER. PHOTOCOPIES OF VOUCHER WILL NOT BE ACCEPTED.

Welcome to Rev James Hanson the new Vicar of Burpham.

Jane Agg, Churchwarden



We are delighted to announce that Reverend James Hanson will be joining us as our new vicar here in Burpham.

James is currently curate at Alfold and Loxwood which is in the Diocese of Guildford right on the Surrey Sussex border. He is married to Jenny who until very recently worked for **Home Start** based in the Astolat building in New Inn Lane. Jenny is now training to be a social worker. They have two daughters who are in years 7 and 10.

James brings to us a strong sense of God calling him to Burpham, an understanding of being a vicar in a village community as well as his experience as a headteacher of two schools prior to his ordination. He is looking forward to getting to know the children and staff in the schools and preschools in our parish. James

volunteers once a month as a team leader with **Guildford Street Angels**. When he leads a team of volunteers who walk the town centre streets between 10.30pm and 4.00am on a Friday night, offering support to those who find themselves in need.

James Hanson says:

“Jenny, I and the girls are overjoyed to be joining this wonderful community in the coming months – we can’t wait. We are praying deeply for you all and so look forward to getting to know you and encourage you as we arrive.”

We are excited about James joining us here in Burpham, unbeknown to us he has been walking the streets of


Burpham praying for the parish once a month since the summer, his heart for our community in Burpham and for Jesus shines through.

James will be installed as vicar of Burpham on **Thursday 13th June** at Church of the Holy Spirit; he will then begin his work here in the parish. Look out for him as he walks around our community; you will recognise him from his big smile and bright shoes!

Details of our services and activities are on our website www.burphamchurch.org.uk



Church Office: **01483 825533**
www.burphamchurch.org.uk



yes you can with Slimming World


Contact your local Slimming World Consultant and join a friendly and super-supportive group today!

The power of Food Optimising: based on **science**, backed by **evidence**, loved by millions.

THURSDAYS
8.00am, 9.30am, 11.00am,
5.30pm & 7.00pm

Jacob's Well Village Hall
Jacob's Well Road
Jacob's Well GU4 7PD
Contact: Nicky 07399 953818

slimmingworld.co.uk




Brick Stone & Clay Masonry undertake all types of internal and external brickwork from house building to garden walls and decorative features as well as;

- General Brick and Stonework ●
- Brick & Stone Re Pointing ●
- Brick & Stone Repairs ●
- Decorative Brickwork Features ●
- Chimney Repointing, Repair, Re Build & Removal ●
- Structural Repairs & Remedial wall Tie Installation ●
- Brick & Stonework cleaning ●
- DPC Injection & Damp Works ●



Brick Stone & Clay Masonry
07713 090067 | 01483 789784
brickstoneclaymasonry@gmail.com

Naomi Kefford Counsellor


Dip. Couns., B.A.(Hons), MSc (Psychology), MBACP

Are you experiencing difficulties in coping with life because of:
depression, anxiety, stress, panic attacks, bereavement, other loss in personal or work life, low self-esteem, relationship difficulties?


Counselling can help:
I am now offering 'in person' (face-to-face) counselling as well as Zoom and telephone consultations.

Email or phone me to chat through the options, your first session is discounted to see if you think this may work for you.

Sessions available daytime, evenings & weekends.



Text or call **07881 945779**
E: naomikefford@gmail.com
www.naomikeffordcounsellor.com





EST. 1983
PRORANGE
SERVICES



(Formerly Surrey Cleaning Services)

**Professional Cleaning &
 Restoration Services in Surrey &
 Surrounding Areas**

**Carpet Cleaning
 Upholstery Cleaning
 Hard Floor Cleaning
 Wood Floor Restoration**

Covering:
 Surrey, Hampshire, West Sussex, Berkshire, London



www.prorangervices.co.uk
info@prorangervices.co.uk
 01483 566802

VERY HIGHLY DEMANDED



AVOID DISAPPOINTMENT, BOOK TODAY

**A FRIENDLY AND
 PROFESSIONAL
 APPROACH TO BEAUTY
 BY A FULLY QUALIFIED
 AND EXPERIENCED
 THERAPIST**

Opi Gel Color
 Eyebrow/Eyelash Tint
 Spray Tan
 Waxing
 Facials
 Hot Lava Shell Massage
 Specialist in Hollywood/
 Brazilian Waxing
 Manicure/Pedicure

www.glamourgarden.co.uk

GLAMOUR GARDEN



Call Gail on 07789 741344 or
 email gail@glamourgarden.co.uk

Burpham Gardening Hints & Tips

May & June

“Hey, ho the wind and the rain... for the rain it raineth every day”
not much has changed since the Bards time. John Boon

Time to welcome your slugs and snails

So says the **Royal Horticultural Society**, as it recently began a campaign to encourage us to see the gastropods in our gardens in a better light.

The RHS says that only nine of the 44 known species in the UK are likely to threaten our gardens, and that all of them play a vital role in recycling dead plant material and animal waste, and acting as a food source for hedgehogs, frogs, birds, beetles and flies.

In fact, the RHS's principal entomologist says that we should consider our slugs and snails not as marauding pests bent on eating our flowers and vegetables, but rather as 'garden visitors'.

Things to do in the garden in May.

- 🌱 French and Runner Beans can now be sown outdoors.
- 🌱 There is still time to sow Courgettes and Squash in pots for planting out later, remember always to sow the seed standing on edge to aid germination.
- 🌱 Kale, Leeks and Purple Sprouting should be sown now for harvesting during the Winter months.
- 🌱 Brussel Sprouts and Tomatoes

should be planted towards the end of the month after the risk of a frost has past, start removing side shoots from Tomatoes except for Bush varieties.

...the RHS's principal entomologist says that we should consider our slugs and snails not as marauding pests bent on eating our flowers and vegetables, but rather as 'garden visitors'

- 🌱 Spray Roses regularly with a systemic insecticide to control Blackspot and Greenfly.
- 🌱 Sweet Peas need to be tied to supports as they grow.
- 🌱 Towards the end of the month plant out young Dahlia plants and tubers.
- 🌱 A Spring and Summer dressing should be applied to lawns when rain is forecast.

Things to do in the garden in June.

- 🌱 When Early Potatoes come into flower they are ready to be dug.
- 🌱 Sow French and Runner Beans for a late crop.
- 🌱 Plant out Courgettes and Squash.
- 🌱 Fast growing Annuals such as Calendula can be sown where they are to grow.
- 🌱 Complete the planting of Summer Bedding Plants Cannas, Dahlias and Gladioli
- 🌱 Dead head Delphiniums and Lupins to encourage a second flush.
- 🌱 Spring flowering shrubs such as Forsythia and Philadelphus should be pruned but leave Magnolias until they are in full leaf.



Useful numbers

Police

Call 101 for local police team

Village Halls

Burpham Church Hall 01483 825533

Jacobs Well Village Hall 07482 632144

Burpham Village Hall 01483 567948

Local Councils & Councillors

Borough Councillor (Burpham)

George Potter 07411 005115

Jane Tyson 07768 392686

Borough Councillor

(Worplesdon for Jacobs Well)

Bilal Akhtar 07899 960516

Honor Brooker

Philip Brooker 07912 044546

Worplesdon Parish Council

(Jacobs Well) 01483 300094

County Councillor

(Guildford East – Merrow & Burpham)

George Potter 07411 005115

County Councillor

(Worplesdon for Jacobs Well)

Keith Witham 01483 235292

Supermarkets

Sainsbury's (Burpham) 01483 506767

Local Associations

Burpham Community

Association 07513 366072

Jacobs Well Residents Association

(Secretary) 01483 577994

(Chair) 01483 822976

Veterinary Surgeons

Medivet 01483 604308

Alder Veterinary Practice 01483 536036

Chemists

Boots (Epsom Rd) 01483 504969

Boots (Stoughton Rd) 01483 573779

Schools

Burpham Primary School 01483 572510

George Abbot School 01483 888000

Merrow Infant CofE School 01483 561501

Merrow Junior School 01483 598544

Sports Venues

Sutherland Memorial Park 01483 444718

The Guildford Spectrum 01483 443322

Hospitals

BMI Mount

Alvernia Hospital 01483 378545

Royal Surrey

County Hospital 01483 571122

Nuffield Health

Guildford Hospital 01483 555800

Doctors

Merrow Park Surgery 01483 503331

Churches

Burpham Church (St Luke's & The Church of The Holy Spirit) 01483 825533

Local Charities

Age UK Surrey 01483 503414

Challengers 01483 579390

Guildford Lions 0345 833 2884

The Fountain Centre 01483 406618

Headway Surrey 01483 454433

Dentists

Burpham Dental Care 01483 561666

Waterden Dental Practice 01483 565290



SILVER ARROWS

TRAVEL IN LUXURY - ARRIVE IN STYLE

Silver Arrows Private Hire and Chauffeur Services offers stylish yet reliable and punctual travel throughout the Guildford Borough and beyond. We operate 24 hours a day on booked calls – so don't wait to check in to travel first class.

Typical destinations include airports, theatres, restaurants, train stations, hospitals and many more. Customers use us all year round for personal as well as business trips.

AIRPORT RUNS

Heathrow airport – **from £60** Stansted airport – **from £135**
 Gatwick airport – **from £60** London City airport – **from £115**
 Luton airport – **from £115**

Book online at silver-arrows.co.uk quoting BP2023

Call +44 (0) 1483 280050
 Email info@silver-arrows.co.uk

MARGRAVE SOLICITORS LLP

The Old Post Office, 130 Epsom Road
 Guildford, Surrey GU1 2PT

- Wills, Trusts and Probate
- Lasting Powers of Attorneys
- Court of Protection matters
 - Care Fee advice
- Advising Attorneys / Deputies
 - Non-mortgage related residential conveyancing

01483 562722
enquiries@margravellp.co.uk
www.margravellp.co.uk



Authorised and regulated by the Solicitors Regulation Authority
 SRA number 533213

FUNERAL DIRECTORS AND MEMORIAL STONEMASONS



Robert, Chris, Andrew & Michael Lodge

OUR FAMILY HELPING YOUR FAMILY

For over 240 years, eight generations of the Lodge Family have been privileged to help local families in their time of need. We provide all funerals, whether modern, traditional, green or alternative, with care and compassion.

BURPHAM: 204 London Road 01483 615031

GUILDFORD: 70 Woodbridge Road 01483 562780

Branches also in Woking & West Byfleet

Lodge
BROTHERS 1780
the family you can turn to

Lodge
BROTHERS 1780
& Monk

www.lodgebrothers.co.uk



"An excellent service providing a compassionate funeral for our father. Lodge Brothers exceeded our expectations and demonstrated a depth of care that one would show to their own family."



J. Luxton



ASK ABOUT OUR
PRE-PAYMENT
FUNERAL PLANS

FLORAL TRIBUTES • FUNERAL PLANS • WILLS & PROBATE



Seymours Burpham has been open for 20 years!

The Burpham office has grown consistently over the last 20 years as it subscribes to the general Seymours ethos of personal service and being passionate about the business.

We know the stress involved in moving and so we treat our clients as we'd want to be treated ourselves. We enjoy getting repeat business where one client may have come back to us to move two or three times.

Since opening in 2004, we've helped thousands of people move and become an established supporter of local sports clubs sponsoring Guildford Saints FC, Burpham Juniors FC and Burpham Bowls Club. We've helped to raise money for local charities including £100,000 for Woking & Sam Beare Hospice.

If you're planning a move, we'd be delighted to draw upon our 20 years of experience to help you get where you need to be. Contact us for a free valuation.



Seymours Burpham & Merrow

01483 300667 | sales@seymours-burpham.co.uk